



INTERNATIONAL GEMOLOGICAL INSTITUTE

ELECTRONIC COPY

LABORATORY GROWN DIAMOND REPORT

December 25, 2025

IGI Report Number

LG758572701

Description

LABORATORY GROWN DIAMOND

Shape and Cutting Style

PRINCESS CUT

Measurements

4.29 X 4.21 X 2.89 MM

GRADING RESULTS

Carat Weight

0.46 CARAT

Color Grade

FANCY VIVID PINK

Clarity Grade

VS 2

ADDITIONAL GRADING INFORMATION

Polish

VERY GOOD

Symmetry

VERY GOOD

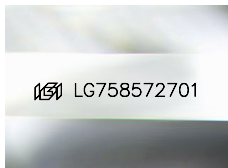
Fluorescence

SLIGHT

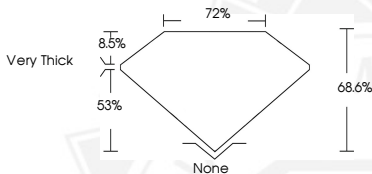
Inscription(s)

IGI LG758572701

Comments: This Laboratory Grown Diamond was created by Chemical Vapor Deposition (CVD) growth process. Indications of post-growth treatment.



Sample Image Used



December 25, 2025

IGI Report Number LG758572701

PRINCESS CUT

LABORATORY GROWN DIAMOND

4.29 X 4.21 X 2.89 MM

Carat Weight 0.46 CARAT

Color Grade FANCY VIVID PINK

Clarity Grade VS 2

Polish VERY GOOD

Symmetry VERY GOOD

Fluorescence SLIGHT

Inscription(s) IGI LG758572701

Comments: This Laboratory Grown Diamond was created by Chemical Vapor Deposition (CVD) growth process. Indications of post-growth treatment.



December 25, 2025

IGI Report Number LG758572701

PRINCESS CUT

LABORATORY GROWN DIAMOND

4.29 X 4.21 X 2.89 MM

Carat Weight 0.46 CARAT

Color Grade FANCY VIVID PINK

Clarity Grade VS 2

Polish VERY GOOD

Symmetry VERY GOOD

Fluorescence SLIGHT

Inscription(s) IGI LG758572701

Comments: This Laboratory Grown Diamond was created by Chemical Vapor Deposition (CVD) growth process. Indications of post-growth treatment.



THIS DOCUMENT WAS PRODUCED WITH THE FOLLOWING SECURITY MEASURES: SPECIAL DOCUMENT PAPER, INK SCREENS, WATERMARK, BACKGROUND DESIGNS, HOLOGRAM AND OTHER SECURITY FEATURES NOT LISTED AND DO EXCEED DOCUMENT SECURITY INDUSTRY GUIDELINES.

For terms & conditions and to verify this report, please visit www.igi.org