



INTERNATIONAL GEMOLOGICAL INSTITUTE

ELECTRONIC COPY

LABORATORY GROWN DIAMOND REPORT

December 23, 2025
IGI Report Number **LG758572621**
Description **LABORATORY GROWN DIAMOND**
Shape and Cutting Style **RECTANGULAR PRINCESS CUT**
Measurements **4.05 X 3.79 X 2.73 MM**

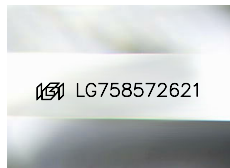
GRADING RESULTS

Carat Weight **0.40 CARAT**
Color Grade **FANCY VIVID BROWNISH PINK**
Clarity Grade **VS 2**

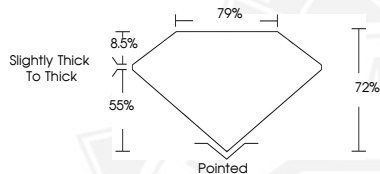
ADDITIONAL GRADING INFORMATION

Polish **EXCELLENT**
Symmetry **VERY GOOD**
Fluorescence **SLIGHT**
Inscription(s) **IGI LG758572621**

Comments: This Laboratory Grown Diamond was created by Chemical Vapor Deposition (CVD) growth process. Indications of post-growth treatment.



Sample Image Used



December 23, 2025

IGI Report Number **LG758572621**
RECTANGULAR PRINCESS CUT
LABORATORY GROWN DIAMOND
4.05 X 3.79 X 2.73 MM

Carat Weight **0.40 CARAT**
Color Grade **FANCY VIVID BROWNISH PINK**
Clarity Grade **VS 2**
Polish **EXCELLENT**
Symmetry **VERY GOOD**
Fluorescence **SLIGHT**
Inscription(s) **IGI LG758572621**

Comments: This Laboratory Grown Diamond was created by Chemical Vapor Deposition (CVD) growth process. Indications of post-growth treatment.



December 23, 2025

IGI Report Number **LG758572621**
RECTANGULAR PRINCESS CUT
LABORATORY GROWN DIAMOND
4.05 X 3.79 X 2.73 MM

Carat Weight **0.40 CARAT**
Color Grade **FANCY VIVID BROWNISH PINK**
Clarity Grade **VS 2**
Polish **EXCELLENT**
Symmetry **VERY GOOD**
Fluorescence **SLIGHT**
Inscription(s) **IGI LG758572621**

Comments: This Laboratory Grown Diamond was created by Chemical Vapor Deposition (CVD) growth process. Indications of post-growth treatment.



THIS DOCUMENT WAS PRODUCED WITH THE FOLLOWING SECURITY MEASURES: SPECIAL DOCUMENT PAPER, INK SCREENS, WATERMARK, BACKGROUND DESIGNS, HOLOGRAM AND OTHER SECURITY FEATURES NOT LISTED AND DO EXCEED DOCUMENT SECURITY INDUSTRY GUIDELINES.

For terms & conditions and to verify this report, please visit www.igi.org