



# INTERNATIONAL GEMOLOGICAL INSTITUTE

ELECTRONIC COPY

## LABORATORY GROWN DIAMOND REPORT

December 26, 2025  
IGI Report Number **LG758572619**  
Description **LABORATORY GROWN DIAMOND**  
Shape and Cutting Style **PRINCESS CUT**  
Measurements **4.09 X 3.99 X 2.82 MM**

### GRADING RESULTS

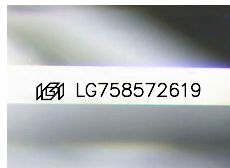
Carat Weight **0.40 CARAT**  
Color Grade **FANCY VIVID ORANGY PINK**  
Clarity Grade **VS 2**

### ADDITIONAL GRADING INFORMATION

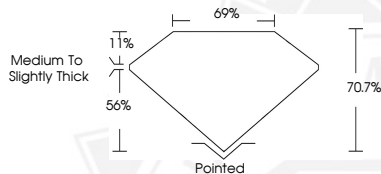
Polish **EXCELLENT**  
Symmetry **VERY GOOD**  
Fluorescence **SLIGHT**  
Inscription(s) **IGI LG758572619**

Comments: This Laboratory Grown Diamond was created by Chemical Vapor Deposition (CVD) growth process. Indications of post-growth treatment.

Secondary color: Orange



Sample Image Used



THIS DOCUMENT WAS PRODUCED WITH THE FOLLOWING SECURITY MEASURES: SPECIAL DOCUMENT PAPER, INK SCREENS, WATERMARK, BACKGROUND DESIGNS, HOLOGRAM AND OTHER SECURITY FEATURES NOT LISTED AND DO EXCEED DOCUMENT SECURITY INDUSTRY GUIDELINES.

For terms & conditions and to verify this report, please visit [www.igi.org](http://www.igi.org)



December 26, 2025

IGI Report Number **LG758572619**

**PRINCESS CUT**

**LABORATORY GROWN DIAMOND**

**4.09 X 3.99 X 2.82 MM**

Carat Weight **0.40 CARAT**  
Color Grade **FANCY VIVID ORANGY PINK**

Clarity Grade **VS 2**  
Polish **EXCELLENT**  
Symmetry **VERY GOOD**  
Fluorescence **SLIGHT**  
Inscription(s) **IGI LG758572619**

Comments: This Laboratory Grown Diamond was created by Chemical Vapor Deposition (CVD) growth process. Indications of post-growth treatment. Secondary color: Orange



December 26, 2025

IGI Report Number **LG758572619**

**PRINCESS CUT**

**LABORATORY GROWN DIAMOND**

**4.09 X 3.99 X 2.82 MM**

Carat Weight **0.40 CARAT**  
Color Grade **FANCY VIVID ORANGY PINK**

Clarity Grade **VS 2**  
Polish **EXCELLENT**  
Symmetry **VERY GOOD**  
Fluorescence **SLIGHT**  
Inscription(s) **IGI LG758572619**

Comments: This Laboratory Grown Diamond was created by Chemical Vapor Deposition (CVD) growth process. Indications of post-growth treatment. Secondary color: Orange