



**LABORATORY GROWN DIAMOND REPORT**

December 26, 2025  
 IGI Report Number **LG758572608**  
 Description **LABORATORY GROWN DIAMOND**  
 Shape and Cutting Style **RECTANGULAR PRINCESS CUT**  
 Measurements **4.19 X 3.87 X 2.94 MM**

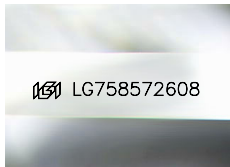
**GRADING RESULTS**

Carat Weight **0.42 CARAT**  
 Color Grade **FANCY VIVID PINK**  
 Clarity Grade **VS 2**

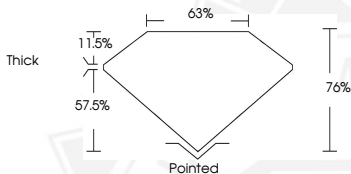
**ADDITIONAL GRADING INFORMATION**

Polish **VERY GOOD**  
 Symmetry **VERY GOOD**  
 Fluorescence **STRONG**  
 Inscription(s) **IGI LG758572608**

Comments: This Laboratory Grown Diamond was created by  
 Chemical Vapor Deposition (CVD) growth process.  
 Indications of post-growth treatment.



Sample Image Used



December 26, 2025  
 IGI Report Number **LG758572608**  
 RECTANGULAR PRINCESS CUT  
 LABORATORY GROWN DIAMOND  
 4.19 X 3.87 X 2.94 MM  
 Carat Weight **0.42 CARAT**  
 Color Grade **FANCY VIVID PINK**  
 Clarity Grade **VS 2**  
 Polish **VERY GOOD**  
 Symmetry **VERY GOOD**  
 Fluorescence **STRONG**  
 Inscription(s) **IGI LG758572608**

Comments: This Laboratory Grown  
 Diamond was created by  
 Chemical Vapor Deposition (CVD)  
 growth process. Indications of  
 post-growth treatment.



December 26, 2025  
 IGI Report Number **LG758572608**  
 RECTANGULAR PRINCESS CUT  
 LABORATORY GROWN DIAMOND  
 4.19 X 3.87 X 2.94 MM  
 Carat Weight **0.42 CARAT**  
 Color Grade **FANCY VIVID PINK**  
 Clarity Grade **VS 2**  
 Polish **VERY GOOD**  
 Symmetry **VERY GOOD**  
 Fluorescence **STRONG**  
 Inscription(s) **IGI LG758572608**

Comments: This Laboratory Grown  
 Diamond was created by  
 Chemical Vapor Deposition (CVD)  
 growth process. Indications of  
 post-growth treatment.



THIS DOCUMENT WAS PRODUCED WITH THE FOLLOWING SECURITY MEASURES: SPECIAL DOCUMENT PAPER, INK SCREENS, WATERMARK, BACKGROUND DESIGNS, HOLOGRAM AND OTHER SECURITY FEATURES NOT LISTED AND DO EXCEED DOCUMENT SECURITY INDUSTRY GUIDELINES.