



INTERNATIONAL GEMOLOGICAL INSTITUTE

ELECTRONIC COPY

LABORATORY GROWN DIAMOND REPORT

December 23, 2025

IGI Report Number

LG758572483

Description

LABORATORY GROWN DIAMOND

Shape and Cutting Style

RECTANGULAR PRINCESS CUT

Measurements

4.03 X 3.67 X 2.47 MM

GRADING RESULTS

Carat Weight

0.32 CARAT

Color Grade

FANCY INTENSE PINK

Clarity Grade

VS 1

ADDITIONAL GRADING INFORMATION

Polish

VERY GOOD

Symmetry

VERY GOOD

Fluorescence

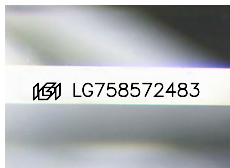
SLIGHT

Inscription(s)

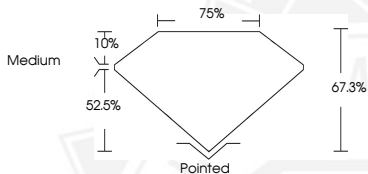
IGI LG758572483

Comments: This Laboratory Grown Diamond was created by Chemical Vapor Deposition (CVD) growth process.

Indications of post-growth treatment.



Sample Image Used



December 23, 2025

IGI Report Number LG758572483

RECTANGULAR PRINCESS CUT

LABORATORY GROWN DIAMOND

4.03 X 3.67 X 2.47 MM

Carat Weight 0.32 CARAT

Color Grade FANCY INTENSE PINK

Clarity Grade VS 1

Polish VERY GOOD

Symmetry VERY GOOD

Fluorescence SLIGHT

Inscription(s) IGI LG758572483

Comments: This Laboratory Grown Diamond was created by Chemical Vapor Deposition (CVD) growth process. Indications of post-growth treatment.



December 23, 2025

IGI Report Number LG758572483

RECTANGULAR PRINCESS CUT

LABORATORY GROWN DIAMOND

4.03 X 3.67 X 2.47 MM

Carat Weight 0.32 CARAT

Color Grade FANCY INTENSE PINK

Clarity Grade VS 1

Polish VERY GOOD

Symmetry VERY GOOD

Fluorescence SLIGHT

Inscription(s) IGI LG758572483

Comments: This Laboratory Grown Diamond was created by Chemical Vapor Deposition (CVD) growth process. Indications of post-growth treatment.



THIS DOCUMENT WAS PRODUCED WITH THE FOLLOWING SECURITY MEASURES: SPECIAL DOCUMENT PAPER, INK SCREENS, WATERMARK, BACKGROUND DESIGNS, HOLOGRAM AND OTHER SECURITY FEATURES NOT LISTED AND DO EXCEED DOCUMENT SECURITY INDUSTRY GUIDELINES.

For terms & conditions and to verify this report, please visit www.igi.org