



**INTERNATIONAL  
GEMOLOGICAL  
INSTITUTE**

**ELECTRONIC COPY**



December 26, 2025

IGI Report Number **LG758572411**

**EMERALD CUT**

**LABORATORY GROWN DIAMOND**

**5.39 X 3.55 X 2.38 MM**

Carat Weight **0.45 CARAT**

Color Grade **FANCY VIVID PINK**

Clarity Grade **VS 1**

Polish **VERY GOOD**

Symmetry **VERY GOOD**

Fluorescence **SLIGHT**

Inscription(s) **IGI LG758572411**

Comments: This Laboratory Grown Diamond was created by Chemical Vapor Deposition (CVD) growth process. Indications of post-growth treatment.

**LABORATORY GROWN DIAMOND REPORT**

December 26, 2025

IGI Report Number

**LG758572411**

Description

**LABORATORY GROWN DIAMOND**

Shape and Cutting Style

**EMERALD CUT**

Measurements

**5.39 X 3.55 X 2.38 MM**

**GRADING RESULTS**

Carat Weight

**0.45 CARAT**

Color Grade

**FANCY VIVID PINK**

Clarity Grade

**VS 1**

**ADDITIONAL GRADING INFORMATION**

Polish

**VERY GOOD**

Symmetry

**VERY GOOD**

Fluorescence

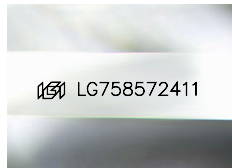
**SLIGHT**

Inscription(s)

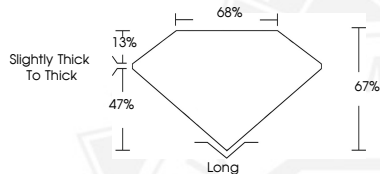
**IGI LG758572411**

Comments: This Laboratory Grown Diamond was created by Chemical Vapor Deposition (CVD) growth process.

Indications of post-growth treatment.



Sample Image Used



December 26, 2025

IGI Report Number **LG758572411**

**EMERALD CUT**

**LABORATORY GROWN DIAMOND**

**5.39 X 3.55 X 2.38 MM**

Carat Weight **0.45 CARAT**

Color Grade **FANCY VIVID PINK**

Clarity Grade **VS 1**

Polish **VERY GOOD**

Symmetry **VERY GOOD**

Fluorescence **SLIGHT**

Inscription(s) **IGI LG758572411**

Comments: This Laboratory Grown Diamond was created by Chemical Vapor Deposition (CVD) growth process. Indications of post-growth treatment.



THIS DOCUMENT WAS PRODUCED WITH THE FOLLOWING SECURITY MEASURES: SPECIAL DOCUMENT PAPER, INK SCREENS, WATERMARK, BACKGROUND DESIGNS, HOLOGRAM AND OTHER SECURITY FEATURES NOT LISTED AND DO EXCEED DOCUMENT SECURITY INDUSTRY GUIDELINES.

For terms & conditions and to verify this report, please visit [www.igi.org](http://www.igi.org)