



INTERNATIONAL GEMOLOGICAL INSTITUTE

LABORATORY GROWN DIAMOND REPORT

December 27, 2025
IGI Report Number **LG758572365**
Description **LABORATORY GROWN DIAMOND**
Shape and Cutting Style **PRINCESS CUT**
Measurements **3.78 X 3.64 X 2.53 MM**

GRADING RESULTS

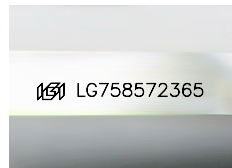
Carat Weight **0.31 CARAT**
Color Grade **FANCY VIVID BROWNISH PINK**
Clarity Grade **SI 1**

ADDITIONAL GRADING INFORMATION

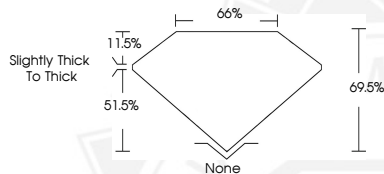
Polish **VERY GOOD**
Symmetry **VERY GOOD**
Fluorescence **STRONG**
Inscription(s) **IGI LG758572365**

Comments: This Laboratory Grown Diamond was created by Chemical Vapor Deposition (CVD) growth process. Indications of post-growth treatment.

ELECTRONIC COPY



Sample Image Used



December 27, 2025

IGI Report Number **LG758572365**

PRINCESS CUT

LABORATORY GROWN DIAMOND

3.78 X 3.64 X 2.53 MM

Carat Weight **0.31 CARAT**
Color Grade **FANCY VIVID BROWNISH PINK**

Clarity Grade **SI 1**

Polish **VERY GOOD**

Symmetry **VERY GOOD**

Fluorescence **STRONG**

Inscription(s) **IGI LG758572365**

Comments: This Laboratory Grown Diamond was created by Chemical Vapor Deposition (CVD) growth process. Indications of post-growth treatment.



December 27, 2025

IGI Report Number **LG758572365**

PRINCESS CUT

LABORATORY GROWN DIAMOND

3.78 X 3.64 X 2.53 MM

Carat Weight **0.31 CARAT**
Color Grade **FANCY VIVID BROWNISH PINK**

Clarity Grade **SI 1**

Polish **VERY GOOD**

Symmetry **VERY GOOD**

Fluorescence **STRONG**

Inscription(s) **IGI LG758572365**

Comments: This Laboratory Grown Diamond was created by Chemical Vapor Deposition (CVD) growth process. Indications of post-growth treatment.



THIS DOCUMENT WAS PRODUCED WITH THE FOLLOWING SECURITY MEASURES: SPECIAL DOCUMENT PAPER, INK SCREENS, WATERMARK, BACKGROUND DESIGNS, HOLOGRAM AND OTHER SECURITY FEATURES NOT LISTED AND DO EXCEED DOCUMENT SECURITY INDUSTRY GUIDELINES.

For terms & conditions and to verify this report, please visit www.igi.org