



December 30, 2025

IGI Report Number **LG758572285**

EMERALD CUT

LABORATORY GROWN DIAMOND

4.68 X 3.21 X 2.08 MM

Carat Weight **0.31 CARAT**

Color Grade **FANCY INTENSE PINK**

Clarity Grade **VS 2**

Polish **VERY GOOD**

Symmetry **VERY GOOD**

Fluorescence **SLIGHT**

Inscription(s) **IGI LG758572285**

Comments: This Laboratory Grown Diamond was created by Chemical Vapor Deposition (CVD) growth process. Indications of post-growth treatment.

LABORATORY GROWN DIAMOND REPORT

December 30, 2025

IGI Report Number

LG758572285

Description

LABORATORY GROWN DIAMOND

Shape and Cutting Style

EMERALD CUT

Measurements

4.68 X 3.21 X 2.08 MM

GRADING RESULTS

Carat Weight

0.31 CARAT

Color Grade

FANCY INTENSE PINK

Clarity Grade

VS 2

ADDITIONAL GRADING INFORMATION

Polish

VERY GOOD

Symmetry

VERY GOOD

Fluorescence

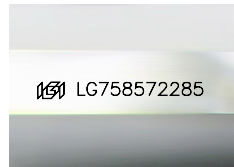
SLIGHT

Inscription(s)

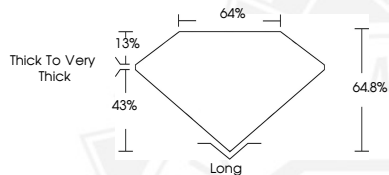
IGI LG758572285

Comments: This Laboratory Grown Diamond was created by Chemical Vapor Deposition (CVD) growth process.

Indications of post-growth treatment.



Sample Image Used



December 30, 2025

IGI Report Number **LG758572285**

EMERALD CUT

LABORATORY GROWN DIAMOND

4.68 X 3.21 X 2.08 MM

Carat Weight **0.31 CARAT**

Color Grade **FANCY INTENSE PINK**

Clarity Grade **VS 2**

Polish **VERY GOOD**

Symmetry **VERY GOOD**

Fluorescence **SLIGHT**

Inscription(s) **IGI LG758572285**

Comments: This Laboratory Grown Diamond was created by Chemical Vapor Deposition (CVD) growth process. Indications of post-growth treatment.



THIS DOCUMENT WAS PRODUCED WITH THE FOLLOWING SECURITY MEASURES: SPECIAL DOCUMENT PAPER, INK SCREENS, WATERMARK, BACKGROUND DESIGNS, HOLOGRAM AND OTHER SECURITY FEATURES NOT LISTED AND DO EXCEED DOCUMENT SECURITY INDUSTRY GUIDELINES.