



January 6, 2026

IGI Report Number **LG758568376**

**PRINCESS CUT  
LABORATORY GROWN DIAMOND**

**4.71 X 4.71 X 3.41 MM**  
Carat Weight **0.70 CARAT**  
Color Grade **FANCY VIVID PINK**  
Clarity Grade **SI 1**  
Polish **VERY GOOD**  
Symmetry **VERY GOOD**  
Fluorescence **SLIGHT**  
Inscription(s) **IGI LG758568376**

Comments: This Laboratory Grown Diamond was created by Chemical Vapor Deposition (CVD) growth process. Indications of post-growth treatment.  
Secondary color: Brown

**LABORATORY GROWN DIAMOND REPORT**

January 6, 2026  
IGI Report Number **LG758568376**  
Description **LABORATORY GROWN DIAMOND**  
Shape and Cutting Style **PRINCESS CUT**  
Measurements **4.71 X 4.71 X 3.41 MM**

**GRADING RESULTS**

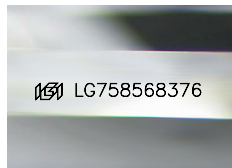
Carat Weight **0.70 CARAT**  
Color Grade **FANCY VIVID PINK**  
Clarity Grade **SI 1**

**ADDITIONAL GRADING INFORMATION**

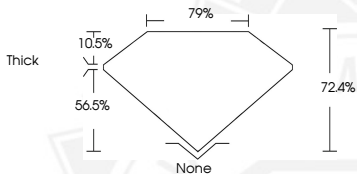
Polish **VERY GOOD**  
Symmetry **VERY GOOD**  
Fluorescence **SLIGHT**  
Inscription(s) **IGI LG758568376**

Comments: This Laboratory Grown Diamond was created by Chemical Vapor Deposition (CVD) growth process.  
Indications of post-growth treatment.

Secondary color: Brown



Sample Image Used



January 6, 2026

IGI Report Number **LG758568376**

**PRINCESS CUT  
LABORATORY GROWN DIAMOND**

**4.71 X 4.71 X 3.41 MM**

Carat Weight **0.70 CARAT**  
Color Grade **FANCY VIVID PINK**  
Clarity Grade **SI 1**  
Polish **VERY GOOD**  
Symmetry **VERY GOOD**  
Fluorescence **SLIGHT**  
Inscription(s) **IGI LG758568376**

Comments: This Laboratory Grown Diamond was created by Chemical Vapor Deposition (CVD) growth process. Indications of post-growth treatment.  
Secondary color: Brown



THIS DOCUMENT WAS PRODUCED WITH THE FOLLOWING SECURITY MEASURES: SPECIAL DOCUMENT PAPER, INK SCREENS, WATERMARK, BACKGROUND DESIGNS, HOLOGRAM AND OTHER SECURITY FEATURES NOT LISTED AND DO EXCEED DOCUMENT SECURITY INDUSTRY GUIDELINES.