



January 13, 2026

IGI Report Number **LG758568375**

**PENTAGONAL MODIFIED
BRILLIANT**

LABORATORY GROWN DIAMOND

5.30 X 6.51 X 2.12 MM

Carat Weight **0.54 CARAT**

Color Grade **FANCY INTENSE
PINK**

Clarity Grade **VS 1**

Polish **EXCELLENT**

Symmetry **EXCELLENT**

Fluorescence **SLIGHT**

Inscription(s) **IGI LG758568375**

Comments: This Laboratory Grown Diamond was created by Chemical Vapor Deposition (CVD) growth process. Indications of post-growth treatment.

LABORATORY GROWN DIAMOND REPORT

January 13, 2026

IGI Report Number

LG758568375

Description

LABORATORY GROWN DIAMOND

Shape and Cutting Style

PENTAGONAL MODIFIED BRILLIANT

Measurements

5.30 X 6.51 X 2.12 MM

GRADING RESULTS

Carat Weight

0.54 CARAT

Color Grade

FANCY INTENSE PINK

Clarity Grade

VS 1

ADDITIONAL GRADING INFORMATION

Polish

EXCELLENT

Symmetry

EXCELLENT

Fluorescence

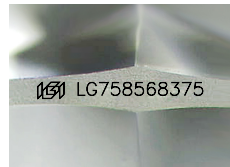
SLIGHT

Inscription(s)

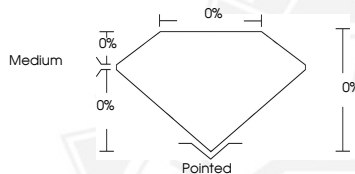
IGI LG758568375

Comments: This Laboratory Grown Diamond was created by Chemical Vapor Deposition (CVD) growth process.

Indications of post-growth treatment.



Sample Image Used



January 13, 2026

IGI Report Number **LG758568375**

PENTAGONAL MODIFIED BRILLIANT

LABORATORY GROWN DIAMOND

5.30 X 6.51 X 2.12 MM

Carat Weight **0.54 CARAT**

Color Grade **FANCY INTENSE
PINK**

Clarity Grade **VS 1**

Polish **EXCELLENT**

Symmetry **EXCELLENT**

Fluorescence **SLIGHT**

Inscription(s) **IGI LG758568375**

Comments: This Laboratory Grown Diamond was created by Chemical Vapor Deposition (CVD) growth process. Indications of post-growth treatment.



THIS DOCUMENT WAS PRODUCED WITH THE FOLLOWING SECURITY MEASURES: SPECIAL DOCUMENT PAPER, INK SCREENS, WATERMARK, BACKGROUND DESIGNS, HOLOGRAM AND OTHER SECURITY FEATURES NOT LISTED AND DO EXCEED DOCUMENT SECURITY INDUSTRY GUIDELINES.