



January 7, 2026

**IGI Report Number** LG758568373  
**CUT CORNERED RECTANGULAR  
MODIFIED BRILLIANT  
LABORATORY GROWN DIAMOND**  
**5.07 X 3.63 X 2.92 MM**

**Carat Weight** 0.50 CARAT  
**Color Grade** FANCY VIVID  
BROWNISH PINK  
**Clarity Grade** VS 2  
**Polish** VERY GOOD  
**Symmetry** GOOD  
**Fluorescence** SLIGHT  
**Inscription(s)** IGI LG758568373

**Comments:** This Laboratory Grown Diamond was created by Chemical Vapor Deposition (CVD) growth process. Indications of post-growth treatment.

**LABORATORY GROWN DIAMOND REPORT**

January 7, 2026  
IGI Report Number **LG758568373**  
Description **LABORATORY GROWN DIAMOND**  
Shape and Cutting Style **CUT CORNERED RECTANGULAR MODIFIED  
BRILLIANT**  
Measurements **5.07 X 3.63 X 2.92 MM**

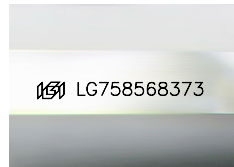
**GRADING RESULTS**

**Carat Weight** 0.50 CARAT  
**Color Grade** FANCY VIVID BROWNISH PINK  
**Clarity Grade** VS 2

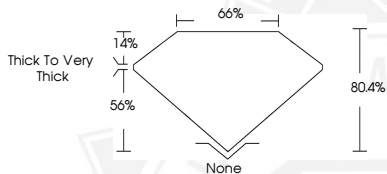
**ADDITIONAL GRADING INFORMATION**

**Polish** VERY GOOD  
**Symmetry** GOOD  
**Fluorescence** SLIGHT  
**Inscription(s)** IGI LG758568373

**Comments:** This Laboratory Grown Diamond was created by Chemical Vapor Deposition (CVD) growth process. Indications of post-growth treatment.



Sample Image Used



January 7, 2026

**IGI Report Number** LG758568373  
**CUT CORNERED RECTANGULAR  
MODIFIED BRILLIANT  
LABORATORY GROWN DIAMOND**  
**5.07 X 3.63 X 2.92 MM**

**Carat Weight** 0.50 CARAT  
**Color Grade** FANCY VIVID  
BROWNISH PINK  
**Clarity Grade** VS 2  
**Polish** VERY GOOD  
**Symmetry** GOOD  
**Fluorescence** SLIGHT  
**Inscription(s)** IGI LG758568373

**Comments:** This Laboratory Grown Diamond was created by Chemical Vapor Deposition (CVD) growth process. Indications of post-growth treatment.

THIS DOCUMENT WAS PRODUCED WITH THE FOLLOWING SECURITY MEASURES: SPECIAL DOCUMENT PAPER, INK SCREENS, WATERMARK, BACKGROUND DESIGNS, HOLOGRAM AND OTHER SECURITY FEATURES NOT LISTED AND DO EXCEED DOCUMENT SECURITY INDUSTRY GUIDELINES.

For terms & conditions and to verify this report, please visit [www.igi.org](http://www.igi.org)