



January 7, 2026

IGI Report Number LG758568360
CUSHION MODIFIED BRILLIANT
LABORATORY GROWN DIAMOND
5.02 X 4.49 X 3.10 MM

Carat Weight 0.62 CARAT
Color Grade FANCY VIVID PINK
Clarity Grade VVS 2
Polish VERY GOOD
Symmetry GOOD
Fluorescence SLIGHT
Inscription(s) IGI LG758568360

Comments: This Laboratory Grown Diamond was created by Chemical Vapor Deposition (CVD) growth process. Indications of post-growth treatment.
Secondary color: Brown

LABORATORY GROWN DIAMOND REPORT

January 7, 2026
IGI Report Number **LG758568360**
Description **LABORATORY GROWN DIAMOND**
Shape and Cutting Style **CUSHION MODIFIED BRILLIANT**
Measurements **5.02 X 4.49 X 3.10 MM**

GRADING RESULTS

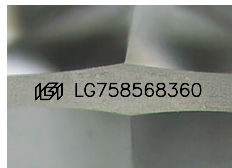
Carat Weight 0.62 CARAT
Color Grade FANCY VIVID PINK
Clarity Grade VVS 2

ADDITIONAL GRADING INFORMATION

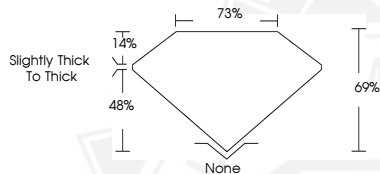
Polish VERY GOOD
Symmetry GOOD
Fluorescence SLIGHT
Inscription(s) IGI LG758568360

Comments: This Laboratory Grown Diamond was created by Chemical Vapor Deposition (CVD) growth process.
Indications of post-growth treatment.

Secondary color: Brown



Sample Image Used



January 7, 2026

IGI Report Number LG758568360
CUSHION MODIFIED BRILLIANT
LABORATORY GROWN DIAMOND
5.02 X 4.49 X 3.10 MM

Carat Weight 0.62 CARAT
Color Grade FANCY VIVID PINK
Clarity Grade VVS 2
Polish VERY GOOD
Symmetry GOOD
Fluorescence SLIGHT
Inscription(s) IGI LG758568360

Comments: This Laboratory Grown Diamond was created by Chemical Vapor Deposition (CVD) growth process. Indications of post-growth treatment.
Secondary color: Brown



THIS DOCUMENT WAS PRODUCED WITH THE FOLLOWING SECURITY MEASURES: SPECIAL DOCUMENT PAPER, INK SCREENS, WATERMARK, BACKGROUND DESIGNS, HOLOGRAM AND OTHER SECURITY FEATURES NOT LISTED AND DO EXCEED DOCUMENT SECURITY INDUSTRY GUIDELINES.