



LABORATORY GROWN DIAMOND REPORT

January 7, 2026
 IGI Report Number **LG758568339**
 Description **LABORATORY GROWN DIAMOND**
 Shape and Cutting Style **PRINCESS CUT**
 Measurements **4.95 X 4.73 X 3.08 MM**

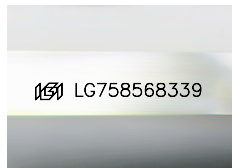
GRADING RESULTS

Carat Weight **0.62 CARAT**
 Color Grade **FANCY INTENSE BROWNISH PINK**
 Clarity Grade **VS 1**

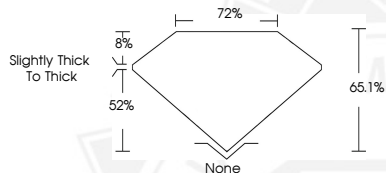
ADDITIONAL GRADING INFORMATION

Polish **VERY GOOD**
 Symmetry **VERY GOOD**
 Fluorescence **SLIGHT**
 Inscription(s) **IGI LG758568339**

Comments: This Laboratory Grown Diamond was created by Chemical Vapor Deposition (CVD) growth process. Indications of post-growth treatment.



Sample Image Used



January 7, 2026
 IGI Report Number **LG758568339**
PRINCESS CUT
LABORATORY GROWN DIAMOND
4.95 X 4.73 X 3.08 MM
 Carat Weight **0.62 CARAT**
 Color Grade **FANCY INTENSE BROWNISH PINK**
 Clarity Grade **VS 1**
 Polish **VERY GOOD**
 Symmetry **VERY GOOD**
 Fluorescence **SLIGHT**
 Inscription(s) **IGI LG758568339**

Comments: This Laboratory Grown Diamond was created by Chemical Vapor Deposition (CVD) growth process. Indications of post-growth treatment.



January 7, 2026
 IGI Report Number **LG758568339**
PRINCESS CUT
LABORATORY GROWN DIAMOND
4.95 X 4.73 X 3.08 MM
 Carat Weight **0.62 CARAT**
 Color Grade **FANCY INTENSE BROWNISH PINK**
 Clarity Grade **VS 1**
 Polish **VERY GOOD**
 Symmetry **VERY GOOD**
 Fluorescence **SLIGHT**
 Inscription(s) **IGI LG758568339**

Comments: This Laboratory Grown Diamond was created by Chemical Vapor Deposition (CVD) growth process. Indications of post-growth treatment.



THIS DOCUMENT WAS PRODUCED WITH THE FOLLOWING SECURITY MEASURES: SPECIAL DOCUMENT PAPER, INK SCREENS, WATERMARK, BACKGROUND DESIGNS, HOLOGRAM AND OTHER SECURITY FEATURES NOT LISTED AND DO EXCEED DOCUMENT SECURITY INDUSTRY GUIDELINES.