



INTERNATIONAL GEMOLOGICAL INSTITUTE

ELECTRONIC COPY

LABORATORY GROWN DIAMOND REPORT

January 3, 2026
IGI Report Number **LG758568307**
Description **LABORATORY GROWN DIAMOND**
Shape and Cutting Style **PRINCESS CUT**
Measurements **5.04 X 4.95 X 3.33 MM**

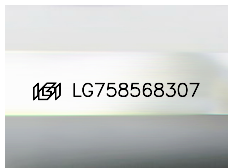
GRADING RESULTS

Carat Weight **0.71 CARAT**
Color Grade **FANCY INTENSE BROWNISH PINK**
Clarity Grade **SI 2**

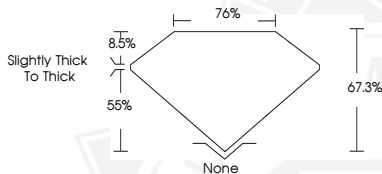
ADDITIONAL GRADING INFORMATION

Polish **VERY GOOD**
Symmetry **VERY GOOD**
Fluorescence **SLIGHT**
Inscription(s) **IGI LG758568307**

Comments: This Laboratory Grown Diamond was created by Chemical Vapor Deposition (CVD) growth process. Indications of post-growth treatment.



Sample Image Used



January 3, 2026

IGI Report Number **LG758568307**

PRINCESS CUT

LABORATORY GROWN DIAMOND

5.04 X 4.95 X 3.33 MM

Carat Weight **0.71 CARAT**

Color Grade **FANCY INTENSE BROWNISH PINK**

Clarity Grade **SI 2**

Polish **VERY GOOD**

Symmetry **VERY GOOD**

Fluorescence **SLIGHT**

Inscription(s) **IGI LG758568307**

Comments: This Laboratory Grown Diamond was created by Chemical Vapor Deposition (CVD) growth process. Indications of post-growth treatment.



January 3, 2026

IGI Report Number **LG758568307**

PRINCESS CUT

LABORATORY GROWN DIAMOND

5.04 X 4.95 X 3.33 MM

Carat Weight **0.71 CARAT**

Color Grade **FANCY INTENSE BROWNISH PINK**

Clarity Grade **SI 2**

Polish **VERY GOOD**

Symmetry **VERY GOOD**

Fluorescence **SLIGHT**

Inscription(s) **IGI LG758568307**

Comments: This Laboratory Grown Diamond was created by Chemical Vapor Deposition (CVD) growth process. Indications of post-growth treatment.



THIS DOCUMENT WAS PRODUCED WITH THE FOLLOWING SECURITY MEASURES: SPECIAL DOCUMENT PAPER, INK SCREENS, WATERMARK, BACKGROUND DESIGNS, HOLOGRAM AND OTHER SECURITY FEATURES NOT LISTED AND DO EXCEED DOCUMENT SECURITY INDUSTRY GUIDELINES.

For terms & conditions and to verify this report, please visit www.igi.org