



January 6, 2026

IGI Report Number **LG758568281**

OVAL BRILLIANT
LABORATORY GROWN DIAMOND
6.96 X 5.07 X 3.11 MM

Carat Weight **0.71 CARAT**
Color Grade **FANCY VIVID PINKISH ORANGE**

Clarity Grade **VS 2**
Polish **VERY GOOD**
Symmetry **VERY GOOD**
Fluorescence **SLIGHT**
Inscription(s) **IGI LG758568281**

Comments: This Laboratory Grown Diamond was created by Chemical Vapor Deposition (CVD) growth process. Indications of post-growth treatment.

LABORATORY GROWN DIAMOND REPORT

January 6, 2026

IGI Report Number

LG758568281

Description

LABORATORY GROWN DIAMOND

Shape and Cutting Style

OVAL BRILLIANT

Measurements

6.96 X 5.07 X 3.11 MM

GRADING RESULTS

Carat Weight

0.71 CARAT

Color Grade

FANCY VIVID PINKISH ORANGE

Clarity Grade

VS 2

ADDITIONAL GRADING INFORMATION

Polish

VERY GOOD

Symmetry

VERY GOOD

Fluorescence

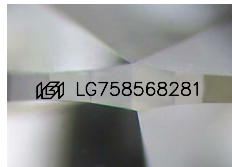
SLIGHT

Inscription(s)

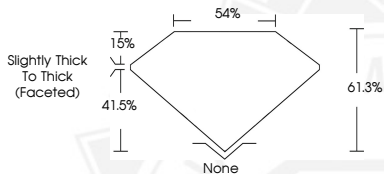
IGI LG758568281

Comments: This Laboratory Grown Diamond was created by Chemical Vapor Deposition (CVD) growth process.

Indications of post-growth treatment.



Sample Image Used



January 6, 2026

IGI Report Number **LG758568281**

OVAL BRILLIANT
LABORATORY GROWN DIAMOND
6.96 X 5.07 X 3.11 MM

Carat Weight **0.71 CARAT**
Color Grade **FANCY VIVID PINKISH ORANGE**

Clarity Grade **VS 2**
Polish **VERY GOOD**
Symmetry **VERY GOOD**
Fluorescence **SLIGHT**
Inscription(s) **IGI LG758568281**

Comments: This Laboratory Grown Diamond was created by Chemical Vapor Deposition (CVD) growth process. Indications of post-growth treatment.



THIS DOCUMENT WAS PRODUCED WITH THE FOLLOWING SECURITY MEASURES: SPECIAL DOCUMENT PAPER, INK SCREENS, WATERMARK, BACKGROUND DESIGNS, HOLOGRAM AND OTHER SECURITY FEATURES NOT LISTED AND DO EXCEED DOCUMENT SECURITY INDUSTRY GUIDELINES.