



INTERNATIONAL GEMOLOGICAL INSTITUTE

ELECTRONIC COPY

LABORATORY GROWN DIAMOND REPORT

January 5, 2026
IGI Report Number **LG758568270**
Description **LABORATORY GROWN DIAMOND**
Shape and Cutting Style **PRINCESS CUT**
Measurements **4.90 X 4.55 X 3.03 MM**

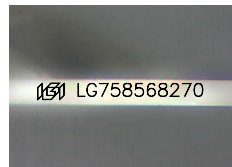
GRADING RESULTS

Carat Weight **0.58 CARAT**
Color Grade **FANCY VIVID PINK**
Clarity Grade **VVS 2**

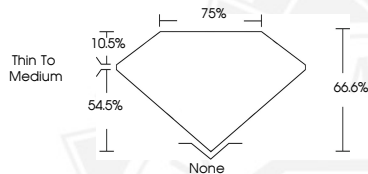
ADDITIONAL GRADING INFORMATION

Polish **VERY GOOD**
Symmetry **VERY GOOD**
Fluorescence **SLIGHT**
Inscription(s) **IGI LG758568270**

Comments: This Laboratory Grown Diamond was created by
Chemical Vapor Deposition (CVD) growth process.
Indications of post-growth treatment.



Sample Image Used



January 5, 2026

IGI Report Number **LG758568270**

PRINCESS CUT

LABORATORY GROWN DIAMOND

4.90 X 4.55 X 3.03 MM

Carat Weight **0.58 CARAT**

Color Grade **FANCY VIVID PINK**

Clarity Grade **VVS 2**

Polish **VERY GOOD**

Symmetry **VERY GOOD**

Fluorescence **SLIGHT**

Inscription(s) **IGI LG758568270**

Comments: This Laboratory Grown
Diamond was created by
Chemical Vapor Deposition (CVD)
growth process. Indications of
post-growth treatment.



January 5, 2026

IGI Report Number **LG758568270**

PRINCESS CUT

LABORATORY GROWN DIAMOND

4.90 X 4.55 X 3.03 MM

Carat Weight **0.58 CARAT**

Color Grade **FANCY VIVID PINK**

Clarity Grade **VVS 2**

Polish **VERY GOOD**

Symmetry **VERY GOOD**

Fluorescence **SLIGHT**

Inscription(s) **IGI LG758568270**

Comments: This Laboratory Grown
Diamond was created by
Chemical Vapor Deposition (CVD)
growth process. Indications of
post-growth treatment.



THIS DOCUMENT WAS PRODUCED WITH THE FOLLOWING SECURITY MEASURES: SPECIAL DOCUMENT PAPER, INK SCREENS, WATERMARK, BACKGROUND DESIGNS, HOLOGRAM AND OTHER SECURITY FEATURES NOT LISTED AND DO EXCEED DOCUMENT SECURITY INDUSTRY GUIDELINES.

For terms & conditions and to verify this report, please visit www.igi.org