



January 6, 2026

IGI Report Number **LG758568243**

PEAR BRILLIANT

LABORATORY GROWN DIAMOND

7.57 X 4.43 X 2.74 MM

Carat Weight **0.55 CARAT**

Color Grade **FANCY INTENSE PINK**

Clarity Grade **SI 2**

Polish **VERY GOOD**

Symmetry **VERY GOOD**

Fluorescence **SLIGHT**

Inscription(s) **IGI LG758568243**

Comments: This Laboratory Grown Diamond was created by Chemical Vapor Deposition (CVD) growth process. Indications of post-growth treatment. Secondary color: Orange

LABORATORY GROWN DIAMOND REPORT

January 6, 2026

IGI Report Number

LG758568243

Description

LABORATORY GROWN DIAMOND

Shape and Cutting Style

PEAR BRILLIANT

Measurements

7.57 X 4.43 X 2.74 MM

GRADING RESULTS

Carat Weight

0.55 CARAT

Color Grade

FANCY INTENSE PINK

Clarity Grade

SI 2

ADDITIONAL GRADING INFORMATION

Polish

VERY GOOD

Symmetry

VERY GOOD

Fluorescence

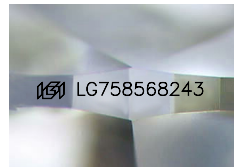
SLIGHT

Inscription(s)

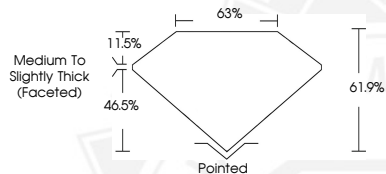
IGI LG758568243

Comments: This Laboratory Grown Diamond was created by Chemical Vapor Deposition (CVD) growth process. Indications of post-growth treatment.

Secondary color: Orange



Sample Image Used



January 6, 2026

IGI Report Number **LG758568243**

PEAR BRILLIANT

LABORATORY GROWN DIAMOND

7.57 X 4.43 X 2.74 MM

Carat Weight **0.55 CARAT**

Color Grade **FANCY INTENSE PINK**

Clarity Grade **SI 2**

Polish **VERY GOOD**

Symmetry **VERY GOOD**

Fluorescence **SLIGHT**

Inscription(s) **IGI LG758568243**

Comments: This Laboratory Grown Diamond was created by Chemical Vapor Deposition (CVD) growth process. Indications of post-growth treatment. Secondary color: Orange



THIS DOCUMENT WAS PRODUCED WITH THE FOLLOWING SECURITY MEASURES: SPECIAL DOCUMENT PAPER, INK SCREENS, WATERMARK, BACKGROUND DESIGNS, HOLOGRAM AND OTHER SECURITY FEATURES NOT LISTED AND DO EXCEED DOCUMENT SECURITY INDUSTRY GUIDELINES.