



**LABORATORY GROWN DIAMOND REPORT**

January 6, 2026  
 IGI Report Number **LG758568200**  
 Description **LABORATORY GROWN DIAMOND**  
 Shape and Cutting Style **PRINCESS CUT**  
 Measurements **4.52 X 4.31 X 3.10 MM**

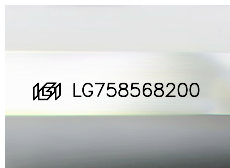
**GRADING RESULTS**

Carat Weight **0.55 CARAT**  
 Color Grade **FANCY INTENSE PINK**  
 Clarity Grade **VS 1**

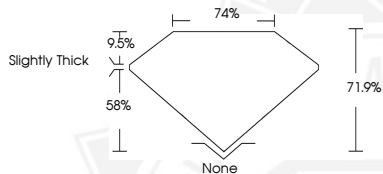
**ADDITIONAL GRADING INFORMATION**

Polish **VERY GOOD**  
 Symmetry **VERY GOOD**  
 Fluorescence **SLIGHT**  
 Inscription(s) **IGI LG758568200**

Comments: This Laboratory Grown Diamond was created by Chemical Vapor Deposition (CVD) growth process. Indications of post-growth treatment.



Sample Image Used



January 6, 2026  
 IGI Report Number **LG758568200**  
**PRINCESS CUT**  
**LABORATORY GROWN DIAMOND**  
**4.52 X 4.31 X 3.10 MM**  
 Carat Weight **0.55 CARAT**  
 Color Grade **FANCY INTENSE PINK**  
 Clarity Grade **VS 1**  
 Polish **VERY GOOD**  
 Symmetry **VERY GOOD**  
 Fluorescence **SLIGHT**  
 Inscription(s) **IGI LG758568200**

Comments: This Laboratory Grown Diamond was created by Chemical Vapor Deposition (CVD) growth process. Indications of post-growth treatment.



January 6, 2026  
 IGI Report Number **LG758568200**  
**PRINCESS CUT**  
**LABORATORY GROWN DIAMOND**  
**4.52 X 4.31 X 3.10 MM**  
 Carat Weight **0.55 CARAT**  
 Color Grade **FANCY INTENSE PINK**  
 Clarity Grade **VS 1**  
 Polish **VERY GOOD**  
 Symmetry **VERY GOOD**  
 Fluorescence **SLIGHT**  
 Inscription(s) **IGI LG758568200**

Comments: This Laboratory Grown Diamond was created by Chemical Vapor Deposition (CVD) growth process. Indications of post-growth treatment.



THIS DOCUMENT WAS PRODUCED WITH THE FOLLOWING SECURITY MEASURES: SPECIAL DOCUMENT PAPER, INK SCREENS, WATERMARK, BACKGROUND DESIGNS, HOLOGRAM AND OTHER SECURITY FEATURES NOT LISTED AND DO EXCEED DOCUMENT SECURITY INDUSTRY GUIDELINES.