



January 7, 2026

IGI Report Number **LG758568183**

**HALF MOON BRILLIANT**

**LABORATORY GROWN DIAMOND**

**7.19 X 4.69 X 2.56 MM**

Carat Weight **0.58 CARAT**

Color Grade **FANCY VIVID GREEN**

Clarity Grade **VS 1**

Polish **VERY GOOD**

Symmetry **VERY GOOD**

Fluorescence **NONE**

Inscription(s) **IGI LG758568183**

Comments: This Laboratory Grown Diamond was created by Chemical Vapor Deposition (CVD) growth process. Indications of post-growth treatment.

**LABORATORY GROWN DIAMOND REPORT**

January 7, 2026

IGI Report Number

**LG758568183**

Description

**LABORATORY GROWN DIAMOND**

Shape and Cutting Style

**HALF MOON BRILLIANT**

Measurements

**7.19 X 4.69 X 2.56 MM**

**GRADING RESULTS**

Carat Weight

**0.58 CARAT**

Color Grade

**FANCY VIVID GREEN**

Clarity Grade

**VS 1**

**ADDITIONAL GRADING INFORMATION**

Polish

**VERY GOOD**

Symmetry

**VERY GOOD**

Fluorescence

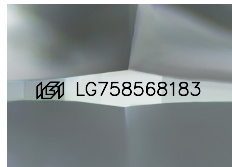
**NONE**

Inscription(s)

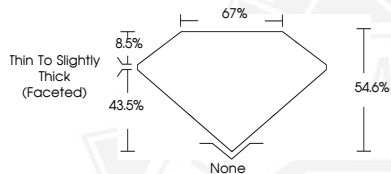
**IGI LG758568183**

Comments: This Laboratory Grown Diamond was created by Chemical Vapor Deposition (CVD) growth process.

Indications of post-growth treatment.



Sample Image Used



January 7, 2026

IGI Report Number **LG758568183**

**HALF MOON BRILLIANT**

**LABORATORY GROWN DIAMOND**

**7.19 X 4.69 X 2.56 MM**

Carat Weight **0.58 CARAT**

Color Grade **FANCY VIVID GREEN**

Clarity Grade **VS 1**

Polish **VERY GOOD**

Symmetry **VERY GOOD**

Fluorescence **NONE**

Inscription(s) **IGI LG758568183**

Comments: This Laboratory Grown Diamond was created by Chemical Vapor Deposition (CVD) growth process. Indications of post-growth treatment.



THIS DOCUMENT WAS PRODUCED WITH THE FOLLOWING SECURITY MEASURES: SPECIAL DOCUMENT PAPER, INK SCREENS, WATERMARK, BACKGROUND DESIGNS, HOLOGRAM AND OTHER SECURITY FEATURES NOT LISTED AND DO EXCEED DOCUMENT SECURITY INDUSTRY GUIDELINES.