



January 7, 2026

IGI Report Number **LG758568166**

**HEART BRILLIANT  
LABORATORY GROWN DIAMOND  
5.35 X 5.89 X 3.73 MM**

Carat Weight **0.70 CARAT**  
Color Grade **FANCY VIVID PINK**  
Clarity Grade **VS 2**  
Polish **VERY GOOD**  
Symmetry **VERY GOOD**  
Fluorescence **SLIGHT**  
Inscription(s) **IGI LG758568166**

Comments: This Laboratory Grown Diamond was created by Chemical Vapor Deposition (CVD) growth process. Indications of post-growth treatment.

**LABORATORY GROWN DIAMOND REPORT**

January 7, 2026

IGI Report Number

**LG758568166**

Description

**LABORATORY GROWN DIAMOND**

Shape and Cutting Style

**HEART BRILLIANT**

Measurements

**5.35 X 5.89 X 3.73 MM**

**GRADING RESULTS**

Carat Weight

**0.70 CARAT**

Color Grade

**FANCY VIVID PINK**

Clarity Grade

**VS 2**

**ADDITIONAL GRADING INFORMATION**

Polish

**VERY GOOD**

Symmetry

**VERY GOOD**

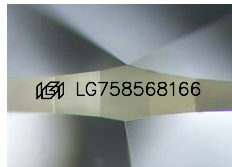
Fluorescence

**SLIGHT**

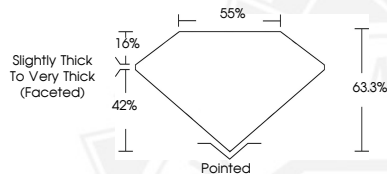
Inscription(s)

**IGI LG758568166**

Comments: This Laboratory Grown Diamond was created by Chemical Vapor Deposition (CVD) growth process. Indications of post-growth treatment.



Sample Image Used



January 7, 2026

IGI Report Number **LG758568166**

**HEART BRILLIANT  
LABORATORY GROWN DIAMOND  
5.35 X 5.89 X 3.73 MM**

Carat Weight **0.70 CARAT**  
Color Grade **FANCY VIVID PINK**  
Clarity Grade **VS 2**  
Polish **VERY GOOD**  
Symmetry **VERY GOOD**  
Fluorescence **SLIGHT**  
Inscription(s) **IGI LG758568166**

Comments: This Laboratory Grown Diamond was created by Chemical Vapor Deposition (CVD) growth process. Indications of post-growth treatment.



THIS DOCUMENT WAS PRODUCED WITH THE FOLLOWING SECURITY MEASURES: SPECIAL DOCUMENT PAPER, INK SCREENS, WATERMARK, BACKGROUND DESIGNS, HOLOGRAM AND OTHER SECURITY FEATURES NOT LISTED AND DO EXCEED DOCUMENT SECURITY INDUSTRY GUIDELINES.