



**INTERNATIONAL
GEMOLOGICAL
INSTITUTE**

ELECTRONIC COPY



January 7, 2026

IGI Report Number LG758568158
**CUT CORNERED RECTANGULAR
MODIFIED BRILLIANT
LABORATORY GROWN DIAMOND**
5.63 X 4.23 X 2.84 MM

LABORATORY GROWN DIAMOND REPORT

January 7, 2026

IGI Report Number

LG758568158

Description

LABORATORY GROWN DIAMOND

Shape and Cutting Style

CUT CORNERED RECTANGULAR MODIFIED
BRILLIANT

Measurements

5.63 X 4.23 X 2.84 MM

GRADING RESULTS

Carat Weight

0.64 CARAT

Color Grade

FANCY VIVID PINK

Clarity Grade

VS 1

ADDITIONAL GRADING INFORMATION

Polish

VERY GOOD

Symmetry

VERY GOOD

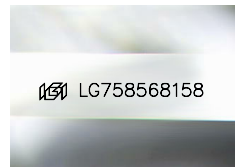
Fluorescence

SLIGHT

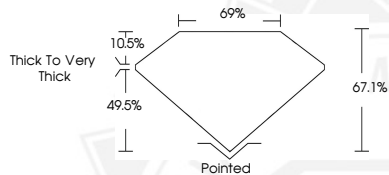
Inscription(s)

IGI LG758568158

Comments: This Laboratory Grown Diamond was created by
Chemical Vapor Deposition (CVD) growth process.
Indications of post-growth treatment.



Sample Image Used



January 7, 2026

IGI Report Number LG758568158
**CUT CORNERED RECTANGULAR
MODIFIED BRILLIANT
LABORATORY GROWN DIAMOND**
5.63 X 4.23 X 2.84 MM

Carat Weight 0.64 CARAT
Color Grade FANCY VIVID PINK
Clarity Grade VS 1
Polish VERY GOOD
Symmetry VERY GOOD
Fluorescence SLIGHT
Inscription(s) IGI LG758568158

Comments: This Laboratory Grown Diamond was created by
Chemical Vapor Deposition (CVD) growth process. Indications of
post-growth treatment.



THIS DOCUMENT WAS PRODUCED WITH THE FOLLOWING SECURITY MEASURES: SPECIAL DOCUMENT PAPER, INK SCREENS, WATERMARK, BACKGROUND DESIGNS, HOLOGRAM AND OTHER SECURITY FEATURES NOT LISTED AND DO EXCEED DOCUMENT SECURITY INDUSTRY GUIDELINES.

For terms & conditions and to verify this report, please visit www.igi.org