



January 17, 2026

IGI Report Number LG758568155
OCTAGONAL MIXED CUT
LABORATORY GROWN DIAMOND
6.50 X 5.15 X 1.92 MM

Carat Weight 0.72 CARAT
Color Grade FANCY VIVID BLUE
Clarity Grade VS 2
Polish VERY GOOD
Symmetry VERY GOOD
Fluorescence NONE
Inscription(s) IGI LG758568155

Comments: This Laboratory Grown Diamond was created by Chemical Vapor Deposition (CVD) growth process. Indications of post-growth treatment.

LABORATORY GROWN DIAMOND REPORT

January 17, 2026

IGI Report Number

LG758568155

Description

LABORATORY GROWN DIAMOND

Shape and Cutting Style

OCTAGONAL MIXED CUT

Measurements

6.50 X 5.15 X 1.92 MM

GRADING RESULTS

Carat Weight

0.72 CARAT

Color Grade

FANCY VIVID BLUE

Clarity Grade

VS 2

ADDITIONAL GRADING INFORMATION

Polish

VERY GOOD

Symmetry

VERY GOOD

Fluorescence

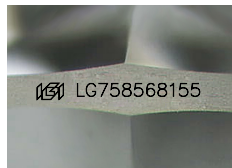
NONE

Inscription(s)

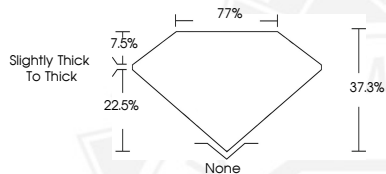
IGI LG758568155

Comments: This Laboratory Grown Diamond was created by Chemical Vapor Deposition (CVD) growth process.

Indications of post-growth treatment.



Sample Image Used



January 17, 2026

IGI Report Number LG758568155
OCTAGONAL MIXED CUT
LABORATORY GROWN DIAMOND
6.50 X 5.15 X 1.92 MM

Carat Weight 0.72 CARAT
Color Grade FANCY VIVID BLUE
Clarity Grade VS 2
Polish VERY GOOD
Symmetry VERY GOOD
Fluorescence NONE
Inscription(s) IGI LG758568155

Comments: This Laboratory Grown Diamond was created by Chemical Vapor Deposition (CVD) growth process. Indications of post-growth treatment.



THIS DOCUMENT WAS PRODUCED WITH THE FOLLOWING SECURITY MEASURES: SPECIAL DOCUMENT PAPER, INK SCREENS, WATERMARK, BACKGROUND DESIGNS, HOLOGRAM AND OTHER SECURITY FEATURES NOT LISTED AND DO EXCEED DOCUMENT SECURITY INDUSTRY GUIDELINES.