



January 7, 2026

IGI Report Number LG758568142
**CUT CORNERED RECTANGULAR
MODIFIED BRILLIANT**
LABORATORY GROWN DIAMOND
5.30 X 3.92 X 2.72 MM

Carat Weight **0.59 CARAT**
Color Grade **FANCY VIVID PINK**
Clarity Grade **VS 1**
Polish **VERY GOOD**
Symmetry **VERY GOOD**
Fluorescence **SLIGHT**
Inscription(s) **IGI LG758568142**

Comments: This Laboratory Grown Diamond was created by Chemical Vapor Deposition (CVD) growth process. Indications of post-growth treatment.
Secondary color: Brown

LABORATORY GROWN DIAMOND REPORT

January 7, 2026

IGI Report Number

LG758568142

Description

LABORATORY GROWN DIAMOND

Shape and Cutting Style

**CUT CORNERED RECTANGULAR MODIFIED
BRILLIANT**

Measurements

5.30 X 3.92 X 2.72 MM

GRADING RESULTS

Carat Weight

0.59 CARAT

Color Grade

FANCY VIVID PINK

Clarity Grade

VS 1

ADDITIONAL GRADING INFORMATION

Polish

VERY GOOD

Symmetry

VERY GOOD

Fluorescence

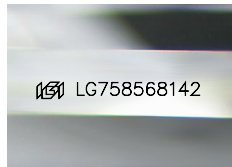
SLIGHT

Inscription(s)

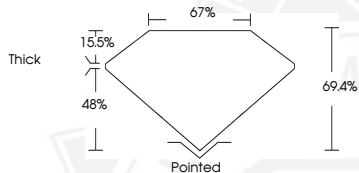
IGI LG758568142

Comments: This Laboratory Grown Diamond was created by Chemical Vapor Deposition (CVD) growth process.
Indications of post-growth treatment.

Secondary color: Brown



Sample Image Used



January 7, 2026

IGI Report Number LG758568142
**CUT CORNERED RECTANGULAR
MODIFIED BRILLIANT**
LABORATORY GROWN DIAMOND
5.30 X 3.92 X 2.72 MM

Carat Weight **0.59 CARAT**
Color Grade **FANCY VIVID PINK**
Clarity Grade **VS 1**
Polish **VERY GOOD**
Symmetry **VERY GOOD**
Fluorescence **SLIGHT**
Inscription(s) **IGI LG758568142**

Comments: This Laboratory Grown Diamond was created by Chemical Vapor Deposition (CVD) growth process. Indications of post-growth treatment.
Secondary color: Brown



THIS DOCUMENT WAS PRODUCED WITH THE FOLLOWING SECURITY MEASURES: SPECIAL DOCUMENT PAPER, INK SCREENS, WATERMARK, BACKGROUND DESIGNS, HOLOGRAM AND OTHER SECURITY FEATURES NOT LISTED AND DO EXCEED DOCUMENT SECURITY INDUSTRY GUIDELINES.