



January 7, 2026

IGI Report Number **LG758568135**

MODIFIED PEAR STEP CUT

LABORATORY GROWN DIAMOND

7.26 X 4.70 X 3.14 MM

Carat Weight **0.70 CARAT**

Color Grade **FANCY VIVID GREEN**

Clarity Grade **VS 1**

Polish **VERY GOOD**

Symmetry **VERY GOOD**

Fluorescence **NONE**

Inscription(s) **IGI LG758568135**

Comments: This Laboratory Grown Diamond was created by Chemical Vapor Deposition (CVD) growth process. Indications of post-growth treatment.

LABORATORY GROWN DIAMOND REPORT

January 7, 2026

IGI Report Number

LG758568135

Description

LABORATORY GROWN DIAMOND

Shape and Cutting Style

MODIFIED PEAR STEP CUT

Measurements

7.26 X 4.70 X 3.14 MM

GRADING RESULTS

Carat Weight

0.70 CARAT

Color Grade

FANCY VIVID GREEN

Clarity Grade

VS 1

ADDITIONAL GRADING INFORMATION

Polish

VERY GOOD

Symmetry

VERY GOOD

Fluorescence

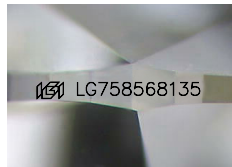
NONE

Inscription(s)

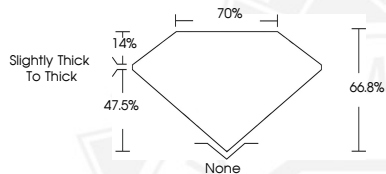
IGI LG758568135

Comments: This Laboratory Grown Diamond was created by Chemical Vapor Deposition (CVD) growth process.

Indications of post-growth treatment.



Sample Image Used



January 7, 2026

IGI Report Number **LG758568135**

MODIFIED PEAR STEP CUT

LABORATORY GROWN DIAMOND

7.26 X 4.70 X 3.14 MM

Carat Weight **0.70 CARAT**

Color Grade **FANCY VIVID GREEN**

Clarity Grade **VS 1**

Polish **VERY GOOD**

Symmetry **VERY GOOD**

Fluorescence **NONE**

Inscription(s) **IGI LG758568135**

Comments: This Laboratory Grown Diamond was created by Chemical Vapor Deposition (CVD) growth process. Indications of post-growth treatment.



THIS DOCUMENT WAS PRODUCED WITH THE FOLLOWING SECURITY MEASURES: SPECIAL DOCUMENT PAPER, INK SCREENS, WATERMARK, BACKGROUND DESIGNS, HOLOGRAM AND OTHER SECURITY FEATURES NOT LISTED AND DO EXCEED DOCUMENT SECURITY INDUSTRY GUIDELINES.