



**LABORATORY GROWN DIAMOND REPORT**

January 6, 2026  
 IGI Report Number **LG758568116**  
 Description **LABORATORY GROWN DIAMOND**  
 Shape and Cutting Style **HALF MOON BRILLIANT**  
 Measurements **7.62 X 4.65 X 2.80 MM**

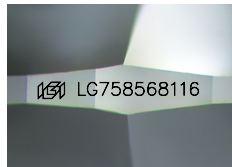
**GRADING RESULTS**

Carat Weight **0.72 CARAT**  
 Color Grade **FANCY VIVID PINKISH ORANGE**  
 Clarity Grade **VS 2**

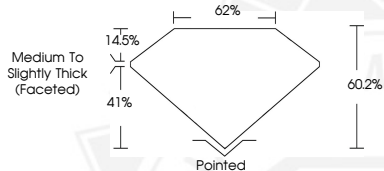
**ADDITIONAL GRADING INFORMATION**

Polish **VERY GOOD**  
 Symmetry **VERY GOOD**  
 Fluorescence **SLIGHT**  
 Inscription(s) **IGI LG758568116**

Comments: This Laboratory Grown Diamond was created by  
 Chemical Vapor Deposition (CVD) growth process.  
 Indications of post-growth treatment.



Sample Image Used



January 6, 2026  
 IGI Report Number **LG758568116**  
 HALF MOON BRILLIANT  
 LABORATORY GROWN DIAMOND  
 7.62 X 4.65 X 2.80 MM  
 Carat Weight **0.72 CARAT**  
 Color Grade **FANCY VIVID PINKISH ORANGE**  
 Clarity Grade **VS 2**  
 Polish **VERY GOOD**  
 Symmetry **VERY GOOD**  
 Fluorescence **SLIGHT**  
 Inscription(s) **IGI LG758568116**  
 Comments: This Laboratory Grown Diamond was created by  
 Chemical Vapor Deposition (CVD) growth process. Indications of  
 post-growth treatment.



January 6, 2026  
 IGI Report Number **LG758568116**  
 HALF MOON BRILLIANT  
 LABORATORY GROWN DIAMOND  
 7.62 X 4.65 X 2.80 MM  
 Carat Weight **0.72 CARAT**  
 Color Grade **FANCY VIVID PINKISH ORANGE**  
 Clarity Grade **VS 2**  
 Polish **VERY GOOD**  
 Symmetry **VERY GOOD**  
 Fluorescence **SLIGHT**  
 Inscription(s) **IGI LG758568116**  
 Comments: This Laboratory Grown Diamond was created by  
 Chemical Vapor Deposition (CVD) growth process. Indications of  
 post-growth treatment.

THIS DOCUMENT WAS PRODUCED WITH THE FOLLOWING SECURITY MEASURES: SPECIAL DOCUMENT PAPER, INK SCREENS, WATERMARK, BACKGROUND DESIGNS, HOLOGRAM AND OTHER SECURITY FEATURES NOT LISTED AND DO EXCEED DOCUMENT SECURITY INDUSTRY GUIDELINES.