

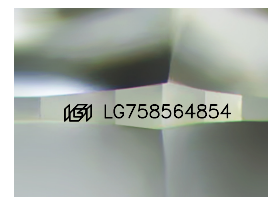
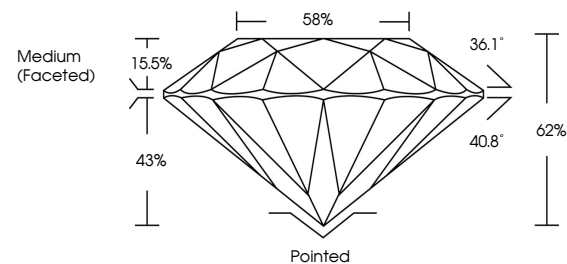


**ELECTRONIC COPY**

## LABORATORY GROWN DIAMOND REPORT

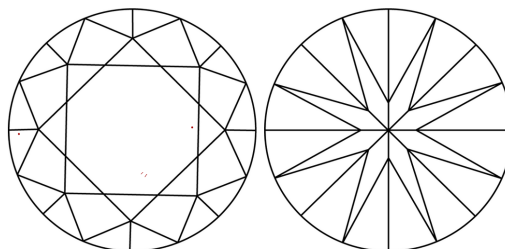
LG758564854  
Report verification at [igi.org](https://igi.org)

## PROPORTIONS



Sample Image Used

## CLARITY CHARACTERISTICS



## KEY TO SYMBOLS

Red symbols indicate internal characteristics.  
Green symbols indicate external characteristics.

## COLOR

D E F G H I J Faint Very Light Light

## CLARITY

FL	IF	VVS <sup>1-2</sup>	VS <sup>1-2</sup>	SI <sup>1-2</sup>	I <sup>1-3</sup>
Flawless	Internally Flawless	Very Very Slightly Included	Very Slightly Included	Slightly Included	Included

## LABORATORY GROWN DIAMOND REPORT



December 22, 2025

IGI Report Number **LG758564854**Description **LABORATORY GROWN DIAMOND**Shape and Cutting Style **ROUND BRILLIANT**

Measurements 8.71 - 8.78 X 5.42 MM

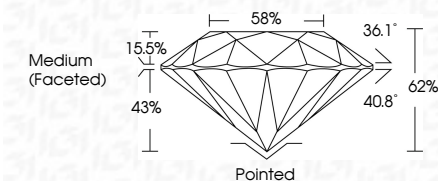
## GRADING RESULTS

Carat Weight **2.57 CARATS**

Color Grade F

Clarity Grade **VVS 2**

Cut Grade **IDEAL**



### ADDITIONAL GRADING INFORMATION

Polish EXCELLENT

Symmetry **EXCELLENT**Fluorescence **NONE**Inscription(s)  LG758564854

Comments: This Laboratory Grown Diamond was created by Chemical Vapor Deposition (CVD) growth process.  
Type IIa



© IGI 2020, International Gemological Institute

FD - 10 20

**www.igi.org**

THIS DOCUMENT WAS PRODUCED WITH THE FOLLOWING SECURITY MEASURES: SPECIAL DOCUMENT PAPER, INK SCREENS, WATERMARK, BACKGROUND DESIGNS, HOLOGRAM AND OTHER SECURITY FEATURES NOT LISTED AND DO EXCEED DOCUMENT SECURITY INDUSTRY GUIDELINE

December 22, 2025  
IGI Report No LG758564854  
ROUND BRILLIANT

ROUND BRILLIANT	8.71 - 8.78 X 5.42 MM	2.57 CARATS	F	VVS 2	IDEAL	62%	59%	Medium (Faceted)
	Carat Weight			Clarity Grade	Cut Grade	Depth	Table	Girdle
	Color Grade							

Culet	Pointed
Polish	EXCELLENT
Symmetry	EXCELLENT
Fluorescence	NONE

**Comments:**  
This Laboratory Grown Diamond was  
created by Chemical Vapor Deposition  
(CVD) growth process.