



**ELECTRONIC COPY**

LG758564105  
Report verification at igi.org



February 5, 2026  
IGI Report Number **LG758564105**  
Description **LABORATORY GROWN DIAMOND**  
Shape and Cutting Style **OCTAGONAL STEP CUT**  
Measurements **7.15 X 5.77 X 3.43 MM**  
**GRADING RESULTS**  
Carat Weight **1.16 CARAT**  
Color Grade **FANCY ORANGY PINK**  
Clarity Grade **VVS 2**

**LABORATORY GROWN DIAMOND REPORT**

February 5, 2026  
IGI Report Number **LG758564105**  
Description **LABORATORY GROWN DIAMOND**  
Shape and Cutting Style **OCTAGONAL STEP CUT**  
Measurements **7.15 X 5.77 X 3.43 MM**

**GRADING RESULTS**

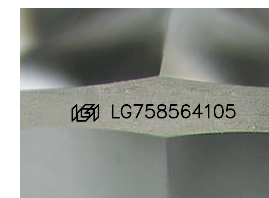
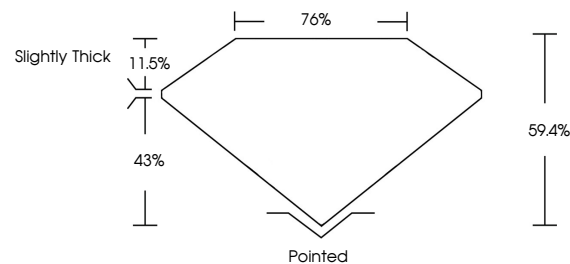
Carat Weight **1.16 CARAT**  
Color Grade **FANCY ORANGY PINK**  
Clarity Grade **VVS 2**

**ADDITIONAL GRADING INFORMATION**

Polish **VERY GOOD**  
Symmetry **VERY GOOD**  
Fluorescence **SLIGHT**  
Inscription(s) **LG758564105**

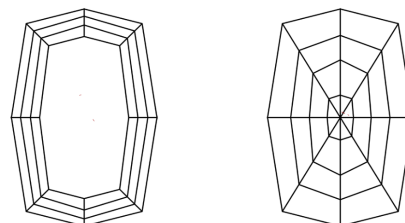
Comments: This Laboratory Grown Diamond was created by Chemical Vapor Deposition (CVD) growth process. Indications of post-growth treatment.

**PROPORTIONS**



Sample Image Used

**CLARITY CHARACTERISTICS**



**KEY TO SYMBOLS**

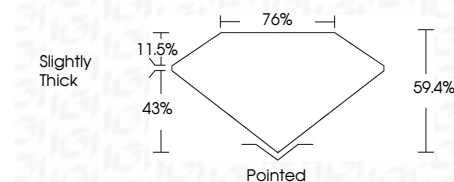
Red symbols indicate internal characteristics.  
Green symbols indicate external characteristics.

**COLOR**

D E F G H I J Faint Very Light Light

**CLARITY**

| FL       | IF                  | VVS <sup>1-2</sup>          | VS <sup>1-2</sup>      | SI <sup>1-2</sup> | I <sup>1-3</sup> |
|----------|---------------------|-----------------------------|------------------------|-------------------|------------------|
| Flawless | Internally Flawless | Very Very Slightly Included | Very Slightly Included | Slightly Included | Included         |



**ADDITIONAL GRADING INFORMATION**

Polish **VERY GOOD**  
Symmetry **VERY GOOD**  
Fluorescence **SLIGHT**  
Inscription(s) **LG758564105**  
Comments: This Laboratory Grown Diamond was created by Chemical Vapor Deposition (CVD) growth process. Indications of post-growth treatment.



**IGI**



February 5, 2026  
IGI Report No **LG758564105**  
**OCTAGONAL STEP CUT**  
**7.15 X 5.77 X 3.43 MM**  
Carat Weight **1.16 CARAT**  
Color Grade **FANCY ORANGY PINK**  
Clarity Grade **VVS 2**  
Depth **43%**  
Table **76%**  
Girdle **Slightly Thick**  
Culet **Pointed**  
Polish **VERY GOOD**  
Symmetry **VERY GOOD**  
Fluorescence **SLIGHT**  
Inscription(s) **LG758564105**

Comments: This Laboratory Grown Diamond was created by Chemical Vapor Deposition (CVD) growth process. Indications of post-growth treatment.