



December 31, 2025

IGI Report Number LG758562341
PEAR MODIFIED BRILLIANT
LABORATORY GROWN DIAMOND
6.59 X 4.41 X 2.87 MM

Carat Weight 0.58 CARAT
Color Grade FANCY VIVID PINK
Clarity Grade VVS 2
Polish VERY GOOD
Symmetry VERY GOOD
Fluorescence STRONG
Inscription(s) IGI LG758562341

Comments: This Laboratory Grown Diamond was created by Chemical Vapor Deposition (CVD) growth process. Indications of post-growth treatment.

LABORATORY GROWN DIAMOND REPORT

December 31, 2025

IGI Report Number

LG758562341

Description

LABORATORY GROWN DIAMOND

Shape and Cutting Style

PEAR MODIFIED BRILLIANT

Measurements

6.59 X 4.41 X 2.87 MM

GRADING RESULTS

Carat Weight

0.58 CARAT

Color Grade

FANCY VIVID PINK

Clarity Grade

VVS 2

ADDITIONAL GRADING INFORMATION

Polish

VERY GOOD

Symmetry

VERY GOOD

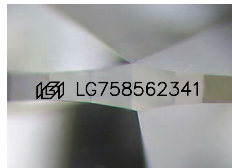
Fluorescence

STRONG

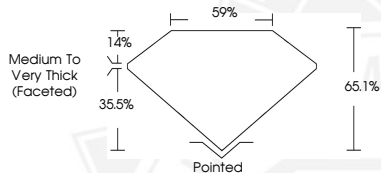
Inscription(s)

IGI LG758562341

Comments: This Laboratory Grown Diamond was created by Chemical Vapor Deposition (CVD) growth process. Indications of post-growth treatment.



Sample Image Used



December 31, 2025

IGI Report Number LG758562341
PEAR MODIFIED BRILLIANT
LABORATORY GROWN DIAMOND
6.59 X 4.41 X 2.87 MM

Carat Weight 0.58 CARAT
Color Grade FANCY VIVID PINK
Clarity Grade VVS 2
Polish VERY GOOD
Symmetry VERY GOOD
Fluorescence STRONG
Inscription(s) IGI LG758562341

Comments: This Laboratory Grown Diamond was created by Chemical Vapor Deposition (CVD) growth process. Indications of post-growth treatment.



THIS DOCUMENT WAS PRODUCED WITH THE FOLLOWING SECURITY MEASURES: SPECIAL DOCUMENT PAPER, INK SCREENS, WATERMARK, BACKGROUND DESIGNS, HOLOGRAM AND OTHER SECURITY FEATURES NOT LISTED AND DO EXCEED DOCUMENT SECURITY INDUSTRY GUIDELINES.