



ELECTRONIC COPY

LG758561390
Report verification at igi.org



December 24, 2025
IGI Report Number **LG758561390**
Description **LABORATORY GROWN DIAMOND**
Shape and Cutting Style **CUT CORNERED
RECTANGULAR MODIFIED
BRILLIANT**
Measurements **10.40 X 7.18 X 4.97 MM**
GRADING RESULTS
Carat Weight **3.23 CARATS**
Color Grade **FANCY VIVID PINK**
Clarity Grade **VS 2**

December 24, 2025
IGI Report Number **LG758561390**
Description **LABORATORY GROWN DIAMOND**
Shape and Cutting Style **CUT CORNERED RECTANGULAR
MODIFIED BRILLIANT**
Measurements **10.40 X 7.18 X 4.97 MM**

GRADING RESULTS

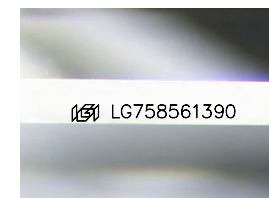
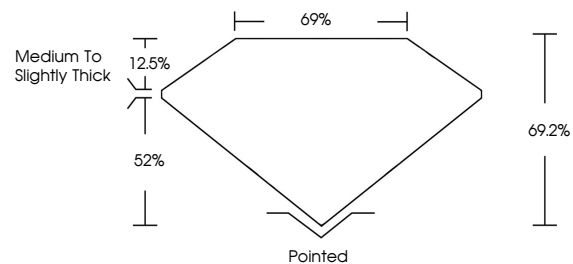
Carat Weight **3.23 CARATS**
Color Grade **FANCY VIVID PINK**
Clarity Grade **VS 2**

ADDITIONAL GRADING INFORMATION

Polish **VERY GOOD**
Symmetry **EXCELLENT**
Fluorescence **STRONG**
Inscription(s) **IGI LG758561390**

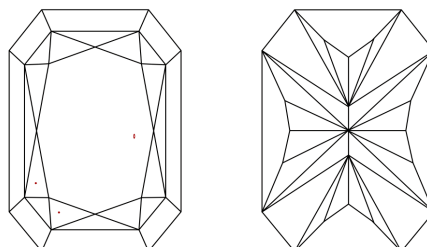
Comments: This Laboratory Grown Diamond was created by Chemical Vapor Deposition (CVD) growth process. Indications of post-growth treatment.

PROPORTIONS



Sample Image Used

CLARITY CHARACTERISTICS



KEY TO SYMBOLS

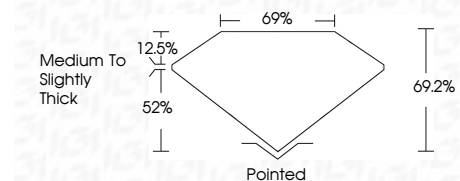
Red symbols indicate internal characteristics.
Green symbols indicate external characteristics.

COLOR

D E F G H I J Faint Very Light Light

CLARITY

FL	IF	VS ¹⁻²	VS ¹⁻²	SI ¹⁻²	I ¹⁻³
Flawless	Internally Flawless	Very Very Slightly Included	Very Slightly Included	Slightly Included	Included



ADDITIONAL GRADING INFORMATION

Polish **VERY GOOD**
Symmetry **EXCELLENT**
Fluorescence **STRONG**
Inscription(s) **IGI LG758561390**
Comments: This Laboratory Grown Diamond was created by Chemical Vapor Deposition (CVD) growth process. Indications of post-growth treatment.



IGI



December 24, 2025
IGI Report No. LG758561390
CUT CORNERED RECT. MODIFIED BRILLIANT
10.40 X 7.18 X 4.97 MM
3.23 CARATS
FANCY VIVID PINK
VS 2
69.2%
69%
Medium to Slightly Thick
Pointed
VERY GOOD
EXCELLENT
STRONG
IGI LG758561390
Comments: This Laboratory Grown Diamond was created by Chemical Vapor Deposition (CVD) growth process. Indications of post-growth treatment.