

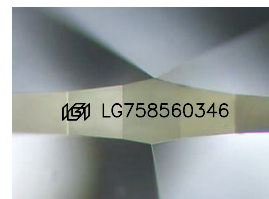
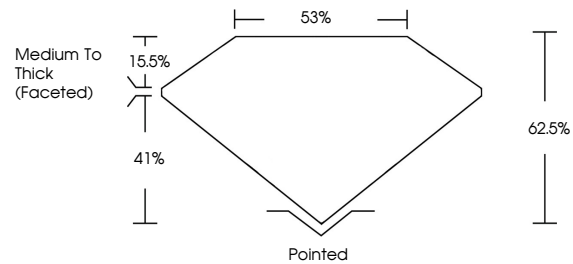


**INTERNATIONAL  
GEMOLOGICAL  
INSTITUTE**

**ELECTRONIC COPY**

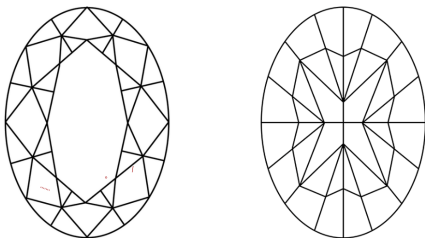
LG758560346  
Report verification at [igi.org](https://igi.org)

## PROPORTIONS



Sample Image Used

## CLARITY CHARACTERISTICS



## KEY TO SYMBOLS

Red symbols indicate internal characteristics.  
Green symbols indicate external characteristics.

**COLOR**

D E F G H I J Faint Very Light Light

## CLARITY

FL	IF	VVS <sup>1-2</sup>	VS <sup>1-2</sup>	SI <sup>1-2</sup>	I <sup>1-3</sup>
Flawless	Internally Flawless	Very Very Slightly Included	Very Slightly Included	Slightly Included	Included



December 26, 2025

IGI Report Number **LG758560346**

Description	LABORATORY GROWN DIAMOND
-------------	--------------------------

Shape and Cutting Style **OVAL MODIFIED BRILLIANT**

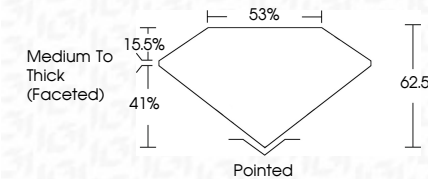
Measurements **7.93 X 5.22 X 3.26 MM**

## GRADING RESULTS

Carat Weight	1.00 CARAT
--------------	------------

Color Grade **FANCY INTENSE YELLOW**

Clarity Grade VS 1



### ADDITIONAL GRADING INFORMATION

Polish **EXCELLENT**

Symmetry **VERY GOOD**

Fluorescence NONI

Inscription(s)  LG758560346

Comments: This Laboratory Grown Diamond was created by Chemical Vapor Deposition (CVD) growth process.



IG



© IGI 2020, International Gemological Institute

FD - 10 20

**www.igi.org**

THIS DOCUMENT WAS PRODUCED WITH THE FOLLOWING SECURITY MEASURES: SPECIAL DOCUMENT PAPER, INK SCREENS, WATERMARK, BACKGROUND DESIGNS, HOLOGRAM AND OTHER SECURITY FEATURES NOT LISTED AND DO EXCEED DOCUMENT SECURITY INDUSTRY GUIDELINES

December 26, 2025  
IGI Report No LG758560346  
OVAL MODIFIED BRILLIANT

7.93 X 5.22 X 3.26 MM		1.00 CARAT
Carat Weight	FANCY INTENSE YELLOW	
Color Grade	VS 1	
Clarity Grade	62.5%	
Depth	53%	
Table	Medium to Thick (Faceted)	
Girdle		
Culet	Pointed	
Polish	EXCELLENT	
Symmetry	VERY GOOD	
Fluorescence	NONE	
Inscriptions(s)	4681 (7785870364)	

**Comments:**  
This Laboratory Grown Diamond was  
created by Chemical Vapor Deposition