



**ELECTRONIC COPY**

LG758560274  
Report verification at igi.org



December 25, 2025

IGI Report Number **LG758560274**

Description **LABORATORY GROWN DIAMOND**

Shape and Cutting Style **TAPERED BAGUETTE**

Measurements **8.14 X 5.10 X 3.14 MM**

**GRADING RESULTS**

Carat Weight **1.02 CARAT**

Color Grade **FANCY DEEP GREY GREEN**

Clarity Grade **VS 2**

December 25, 2025  
IGI Report Number **LG758560274**  
Description **LABORATORY GROWN DIAMOND**  
Shape and Cutting Style **TAPERED BAGUETTE**  
Measurements **8.14 X 5.10 X 3.14 MM**

**GRADING RESULTS**

Carat Weight **1.02 CARAT**

Color Grade **FANCY DEEP GREY GREEN**

Clarity Grade **VS 2**

**ADDITIONAL GRADING INFORMATION**

Polish **EXCELLENT**

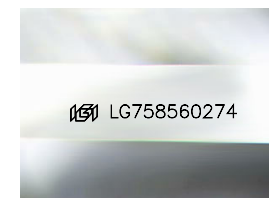
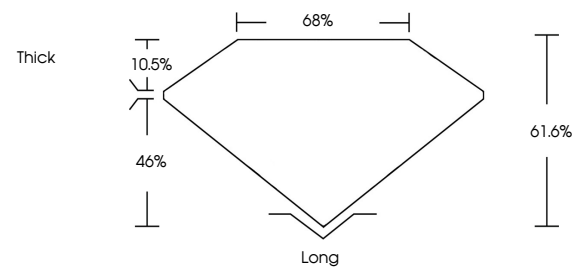
Symmetry **EXCELLENT**

Fluorescence **VERY SLIGHT**

Inscription(s) **LG758560274**

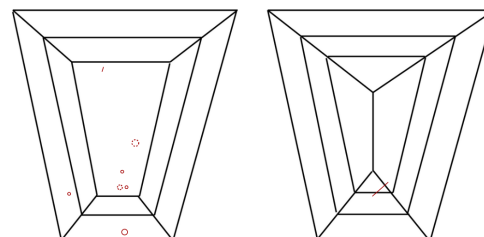
Comments: This Laboratory Grown Diamond was created by Chemical Vapor Deposition (CVD) growth process. Indications of post-growth treatment.

**PROPORTIONS**



Sample Image Used

**CLARITY CHARACTERISTICS**



**KEY TO SYMBOLS**

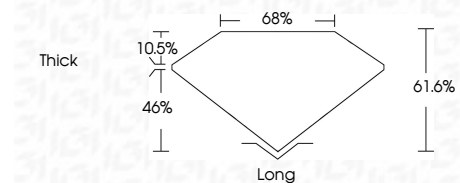
Red symbols indicate internal characteristics.  
Green symbols indicate external characteristics.

**COLOR**

D E F G H I J Faint Very Light Light

**CLARITY**

FL	IF	VS <sup>1-2</sup>	VS <sup>1-2</sup>	SI <sup>1-2</sup>	I <sup>1-3</sup>
Flawless	Internally Flawless	Very Very Slightly Included	Very Slightly Included	Slightly Included	Included



**ADDITIONAL GRADING INFORMATION**

Polish **EXCELLENT**

Symmetry **EXCELLENT**

Fluorescence **VERY SLIGHT**

Inscription(s) **LG758560274**

Comments: This Laboratory Grown Diamond was created by Chemical Vapor Deposition (CVD) growth process. Indications of post-growth treatment.



December 25, 2025	1.02 CARAT	Long
IGI Report No LG758560274	FANCY DEEP GREY GREEN	EXCELLENT
TAPERED BAGUETTE	VS 2	EXCELLENT
8.14 X 5.10 X 3.14 MM	61.6%	VERY SLIGHT
Color Grade	65%	Inscription(s)
Clarity Grade	Thick	LG758560274
Depth	Culet	
Table	Polish	
Girdle	Symmetry	
	Fluorescence	
	Inscription(s)	

Comments: This Laboratory Grown Diamond was created by Chemical Vapor Deposition (CVD) growth process. Indications of post-growth treatment.