



ELECTRONIC COPY

LABORATORY GROWN DIAMOND REPORT

LG758559503
Report verification at igi.org

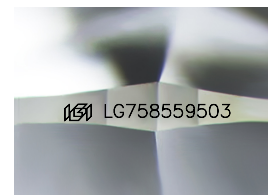
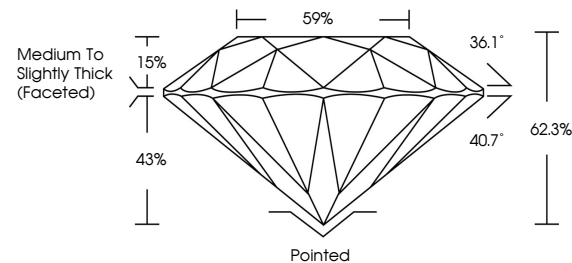
December 19, 2025	
IGI Report Number	LG758559503
Description	LABORATORY GROWN DIAMOND
Shape and Cutting Style	ROUND BRILLIANT
Measurements	7.99 - 8.02 X 4.99 MM
GRADING RESULTS	
Carat Weight	2.01 CARATS
Color Grade	E
Clarity Grade	VS 1
Cut Grade	EXCELLENT

ADDITIONAL GRADING INFORMATION

Polish	EXCELLENT
Symmetry	EXCELLENT
Fluorescence	NONE
Inscription(s)	 LG758559503

Comments: This Laboratory Grown Diamond was created by Chemical Vapor Deposition (CVD) growth process.
Type IIa

PROPORTIONS



Sample Image Used

COLOR

D E F G H I J Faint Very Light Light

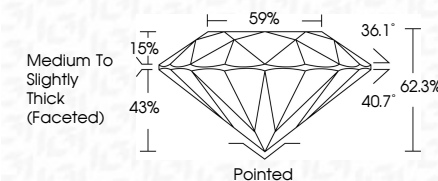
CLARITY

FL	IF	VVS ¹⁻²	VS ¹⁻²	SI ¹⁻²	I ¹⁻³
Flawless	Internally Flawless	Very Very Slightly Included	Very Slightly Included	Slightly Included	Included

LABORATORY GROWN DIAMOND REPORT



December 19, 2025	
IGI Report Number	LG758559503
Description	LABORATORY GROWN DIAMOND
Shape and Cutting Style	ROUND BRILLIANT
Measurements	7.99 - 8.02 X 4.99 MM
GRADING RESULTS	
Carat Weight	2.01 CARATS
Color Grade	E
Clarity Grade	VS 1
Cut Grade	EXCELLENT



ADDITIONAL GRADING INFORMATION

Polish	EXCELLENT
Symmetry	EXCELLENT
Fluorescence	NONE
Inscription(s)	 LG758559503
<p>Comments: This Laboratory Grown Diamond was created by Chemical Vapor Deposition (CVD) growth process.</p> <p>Type IIa</p>	



© IGI 2020, International Gemological Institute

FD - 10 20



THIS DOCUMENT WAS PRODUCED WITH THE FOLLOWING SECURITY MEASURES: SPECIAL DOCUMENT PAPER, INK SCREENS, WATERMARK, BACKGROUND DESIGNS, HOLOGRAM, AND OTHER SECURITY FEATURES NOT LISTED AND DO EXCEED DOCUMENT SECURITY INDUSTRY GUIDELINES.

www.igi.org

December 19, 2025
IGI Report No LG758559503
ROUND BRILLIANT

7.99 - 8.02 X 4.99 MM

7.99 - 8.02 X 4.99 MM

Color Grade	E
Catali Weiglin	ZUI CARAIS

Clarity Grade	VS 1
---------------	------

Quality Grade	V31
Out Grade	EXCELLENT

Depth	62.3%
-------	-------

	Table	59%
Girdle		

Girdle

	Pointed	Culet
in mm (x 1000)		

Cutler	Pointed
Polish	EXCELLENT

Symmetry

Fluorescence	NONE
Inscription(s)	1631 G758559573

Inscription(s)	Accession Number
	1971 LG758559503

Comments:
This Laboratory Grown Diamond was

This Laboratory Grown Diamond was created by Chemical Vapor Deposition

(CVD) growth process,
Type IIa

Type IIa