



ELECTRONIC COPY

LABORATORY GROWN DIAMOND REPORT

LG758559475
Report verification at igi.org

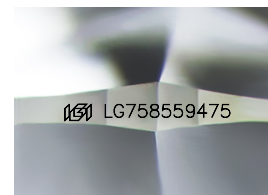
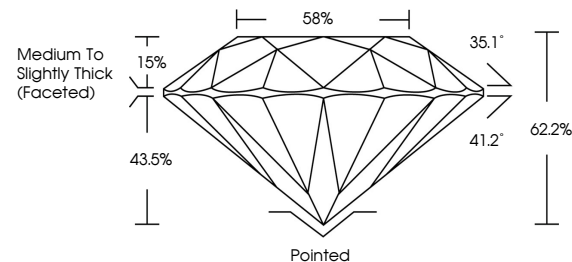
December 20, 2025	
IGI Report Number	LG758559475
Description	LABORATORY GROWN DIAMOND
Shape and Cutting Style	ROUND BRILLIANT
Measurements	8.11 - 8.15 X 5.06 MM
GRADING RESULTS	
Carat Weight	2.07 CARATS
Color Grade	F
Clarity Grade	VVS 2
Cut Grade	IDEAL

ADDITIONAL GRADING INFORMATION

Polish	EXCELLENT
Symmetry	EXCELLENT
Fluorescence	NONE
Inscription(s)	151 LG758559475

Comments: This Laboratory Grown Diamond was created by Chemical Vapor Deposition (CVD) growth process.
Type IIa

PROPORTIONS



Sample Image Used

COLOR

D E F G H I J Faint Very Light Light

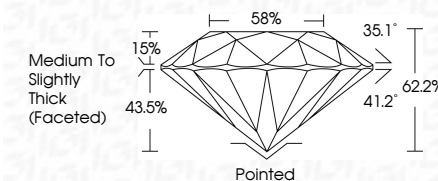
CLARITY

FL	IF	VVS ¹⁻²	VS ¹⁻²	SI ¹⁻²	I ¹⁻³
Flawless	Internally Flawless	Very Very Slightly Included	Very Slightly Included	Slightly Included	Included

LABORATORY GROWN DIAMOND REPORT



December 20, 2025	
IGI Report Number	LG758559475
Description	LABORATORY GROWN DIAMOND
Shape and Cutting Style	ROUND BRILLIANT
Measurements	8.11 - 8.15 X 5.06 MM
GRADING RESULTS	
Carat Weight	2.07 CARATS
Color Grade	F
Clarity Grade	VVS 2
Cut Grade	IDEAL



ADDITIONAL GRADING INFORMATION

Polish	EXCELLENT
Symmetry	EXCELLENT
Fluorescence	NONE
Inscription(s)	 LG758559475
<p>Comments: This Laboratory Grown Diamond was created by Chemical Vapor Deposition (CVD) growth process.</p> <p>Type IIa</p>	



© IGI 2020, International Gemological Institute

FD - 10 20

www.igi.org



THIS DOCUMENT WAS PRODUCED WITH THE FOLLOWING SECURITY MEASURES: SPECIAL DOCUMENT PAPER, INK SCREENS, WATERMARK, BACKGROUND DESIGNS, HOLOGRAM AND OTHER SECURITY FEATURES NOT LISTED AND DO EXCEED DOCUMENT SECURITY INDUSTRY GUIDELINE

December 20, 2025
LGI Report No LG758559475
ROUND BRILLIANT

ROUND BRILLIANT	3.11 - 8.15 X 5.06 MM	2.07 CARATS	
	Carat Weight	F	
	Color Grade	VVS 2	
	Clarity Grade	IDEAL	
	Cut Grade	62.2%	
	Depth	58%	
	Table	Medium to Slightly Thick (Faceted)	
	Girdle	Pointed	
	Culet	EXCELLENT	
	Polish	EXCELLENT	
	Symmetry	NONE	
	Fluorescence		

Comments:
This Laboratory Grown Diamond was
created by Chemical Vapor Deposition
(CVD) growth process.