

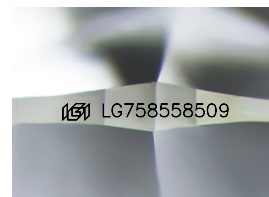
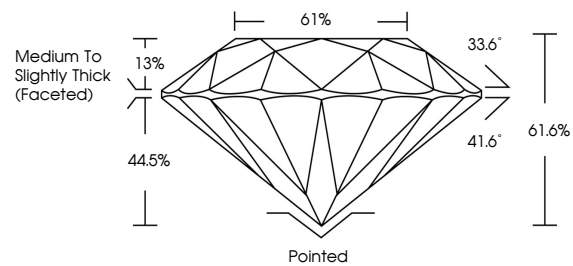


**INTERNATIONAL
GEMOLOGICAL
INSTITUTE**

ELECTRONIC COPY

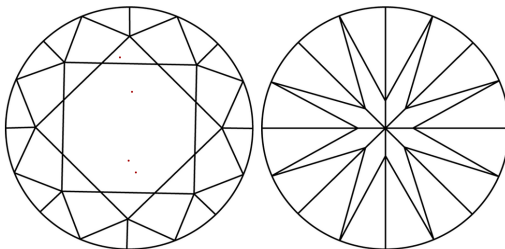
LG758558509
Report verification at igj.org

PROPORTIONS



Sample Image Used

CLARITY CHARACTERISTICS



KEY TO SYMBOLS

Red symbols indicate internal characteristics.
Green symbols indicate external characteristics.

COLOR

D E F G H I J Faint Very Light Light

CLARITY

FL	IF	VVS ¹⁻²	VS ¹⁻²	SI ¹⁻²	I ¹⁻³
Flawless	Internally Flawless	Very Very Slightly Included	Very Slightly Included	Slightly Included	Included



December 22, 2025

IGI Report Number **LG758558509**

Description	LABORATORY GROWN DIAMOND
-------------	--------------------------

Shape and Cutting Style **ROUND BRILLIANT**

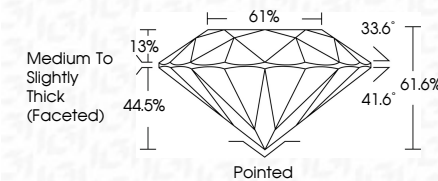
Measurements	10.92 - 10.98 X 6.74 MM
--------------	-------------------------

GRADING RESULTS

Carat Weight **5.02 CARATS**

Color Grade **E**Clarity Grade **VVS 2**

Cut Grade **EXCELLENT**



ADDITIONAL GRADING INFORMATION

Polish **EXCELLENT**Symmetry **EXCELLENT**Fluorescence **NONE**Inscription(s) **131** LG75855850

Comments: This Laboratory Grown Diamond was created by Chemical Vapor Deposition (CVD) growth process.
Type IIa



IG



© IGI 2020, International Gemological Institute

FD - 10 20

www.igi.org

THIS DOCUMENT WAS PRODUCED WITH THE FOLLOWING SECURITY MEASURES: SPECIAL DOCUMENT PAPER, INK SCREENS, WATERMARK, BACKGROUND DESIGNS, HOLOGRAM AND OTHER SECURITY FEATURES NOT LISTED AND DO EXCEED DOCUMENT SECURITY INDUSTRY GUIDELINES

December 22, 2025
IGI Report No LG758558509
ROUND BRILLIANT

10.92 - 10.98 X 6.74 MM	5.02 CARATS	E
Carat Weight	VVS 2	
Color Grade	EXCELLENT	
Cut Grade	61.6%	
Depth	Medium to slightly Thick (faceted)	
Table		
Girdle		
Culet	Poined	
Polish	EXCELLENT	
Symmetry	EXCELLENT	
Fluorescence	NONE	
Measurements	4mm x 6mm	

Comments:
This Laboratory Grown Diamond was created by Chemical Vapor Deposition (CVD) growth process.
Type Ila