



ELECTRONIC COPY

LG758558322
Report verification at igi.org



December 27, 2025
IGI Report Number **LG758558322**
Description **LABORATORY GROWN DIAMOND**
Shape and Cutting Style **CUT CORNERED
RECTANGULAR MODIFIED
BRILLIANT**
Measurements **15.23 X 10.53 X 6.73 MM**
GRADING RESULTS
Carat Weight **9.75 CARATS**
Color Grade **FANCY VIVID PINK**
Clarity Grade **VS 1**

December 27, 2025
IGI Report Number **LG758558322**
Description **LABORATORY GROWN DIAMOND**
Shape and Cutting Style **CUT CORNERED RECTANGULAR
MODIFIED BRILLIANT**
Measurements **15.23 X 10.53 X 6.73 MM**

GRADING RESULTS

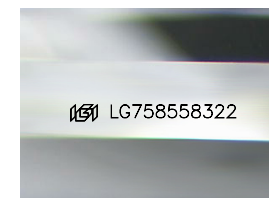
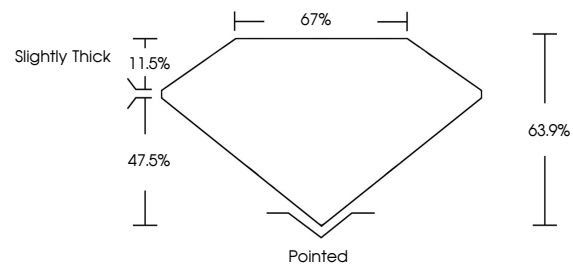
Carat Weight **9.75 CARATS**
Color Grade **FANCY VIVID PINK**
Clarity Grade **VS 1**

ADDITIONAL GRADING INFORMATION

Polish **EXCELLENT**
Symmetry **EXCELLENT**
Fluorescence **SLIGHT**
Inscription(s) **IGI LG758558322**

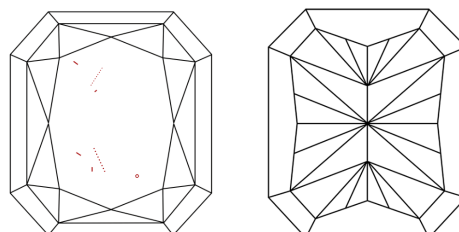
Comments: This Laboratory Grown Diamond was created by Chemical Vapor Deposition (CVD) growth process. Indications of post-growth treatment.

PROPORTIONS



Sample Image Used

CLARITY CHARACTERISTICS



KEY TO SYMBOLS

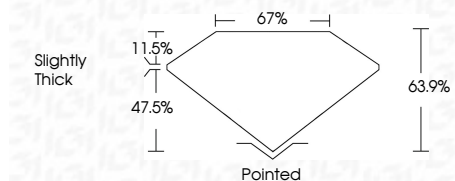
Red symbols indicate internal characteristics.
Green symbols indicate external characteristics.

COLOR

D E F G H I J Faint Very Light Light

CLARITY

FL	IF	VS ¹⁻²	VS ¹⁻²	SI ¹⁻²	I ¹⁻³
Flawless	Internally Flawless	Very Very Slightly Included	Very Slightly Included	Slightly Included	Included



ADDITIONAL GRADING INFORMATION

Polish **EXCELLENT**
Symmetry **EXCELLENT**
Fluorescence **SLIGHT**
Inscription(s) **IGI LG758558322**
Comments: This Laboratory Grown Diamond was created by Chemical Vapor Deposition (CVD) growth process. Indications of post-growth treatment.



December 27, 2025
IGI Report No LG758558322
CUT CORNERED RECT. MODIFIED BRILLIANT
15.23 X 10.53 X 6.73 MM
9.75 CARATS
FANCY VIVID PINK
VS 1
63.9%
67%
Slightly Thick
Pointed
EXCELLENT
EXCELLENT
SLIGHT
IGI LG758558322
Comments: This Laboratory Grown Diamond was created by Chemical Vapor Deposition (CVD) growth process. Indications of post-growth treatment.