



ELECTRONIC COPY

LG758554442
Report verification at igi.org



January 10, 2026

IGI Report Number **LG758554442**

Description **LABORATORY GROWN DIAMOND**

Shape and Cutting Style **HEART BRILLIANT**

Measurements **11.19 X 12.55 X 7.30 MM**

GRADING RESULTS

Carat Weight **6.00 CARATS**

Color Grade **FANCY VIVID PINK**

Clarity Grade **VS 1**

January 10, 2026
IGI Report Number **LG758554442**
Description **LABORATORY GROWN DIAMOND**
Shape and Cutting Style **HEART BRILLIANT**
Measurements **11.19 X 12.55 X 7.30 MM**

GRADING RESULTS

Carat Weight **6.00 CARATS**

Color Grade **FANCY VIVID PINK**

Clarity Grade **VS 1**

ADDITIONAL GRADING INFORMATION

Polish **EXCELLENT**

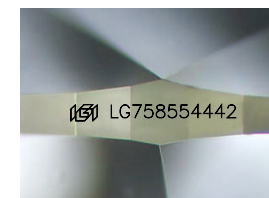
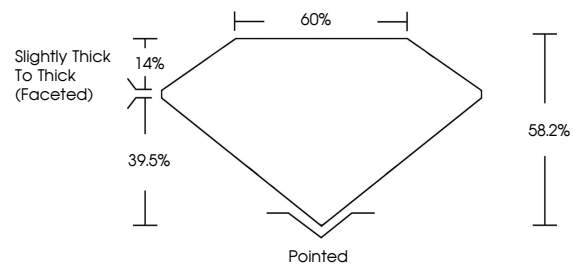
Symmetry **EXCELLENT**

Fluorescence **SLIGHT**

Inscription(s) **LG758554442**

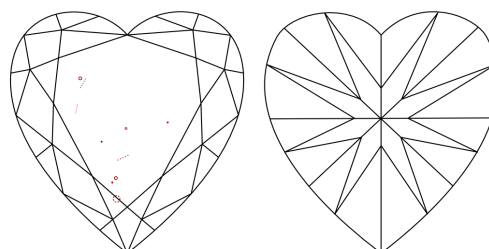
Comments: This Laboratory Grown Diamond was created by Chemical Vapor Deposition (CVD) growth process.
Indications of post-growth treatment.

PROPORTIONS



Sample Image Used

CLARITY CHARACTERISTICS



KEY TO SYMBOLS

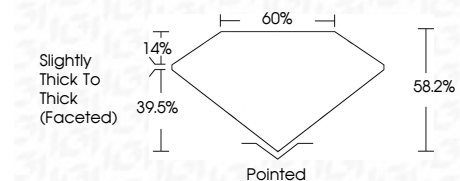
Red symbols indicate internal characteristics.
Green symbols indicate external characteristics.

COLOR

D E F G H I J Faint Very Light Light

CLARITY

FL	IF	VS ¹⁻²	VS ¹⁻²	SI ¹⁻²	I ¹⁻³
Flawless	Internally Flawless	Very Very Slightly Included	Very Slightly Included	Slightly Included	Included



ADDITIONAL GRADING INFORMATION

Polish **EXCELLENT**

Symmetry **EXCELLENT**

Fluorescence **SLIGHT**

Inscription(s) **LG758554442**

Comments: This Laboratory Grown Diamond was created by Chemical Vapor Deposition (CVD) growth process.
Indications of post-growth treatment.



January 10, 2026
IGI Report No LG758554442
HEART BRILLIANT

11.19 X 12.55 X 7.30 MM
6.00 CARATS
FANCY VIVID PINK
VS 1
58.2%
39.5%
Slightly Thick To Thick (Faceted)

Pointed
EXCELLENT
EXCELLENT
SLIGHT
IGI LG758554442

Comments: This Laboratory Grown Diamond was created by Chemical Vapor Deposition (CVD) growth process.
Indications of post-growth treatment.