



ELECTRONIC COPY

LG758553810
Report verification at igi.org



January 8, 2026

IGI Report Number **LG758553810**

Description **LABORATORY GROWN DIAMOND**

Shape and Cutting Style **ROUND BRILLIANT**

Measurements **8.22 - 8.26 X 4.99 MM**

GRADING RESULTS

Carat Weight **2.06 CARATS**

Color Grade **F**

Clarity Grade **VS 1**

Cut Grade **EXCELLENT**

January 8, 2026

IGI Report Number **LG758553810**

Description **LABORATORY GROWN DIAMOND**

Shape and Cutting Style **ROUND BRILLIANT**

Measurements **8.22 - 8.26 X 4.99 MM**

GRADING RESULTS

Carat Weight **2.06 CARATS**

Color Grade **F**

Clarity Grade **VS 1**

Cut Grade **EXCELLENT**

ADDITIONAL GRADING INFORMATION

Polish **EXCELLENT**

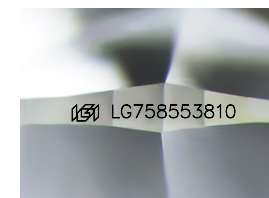
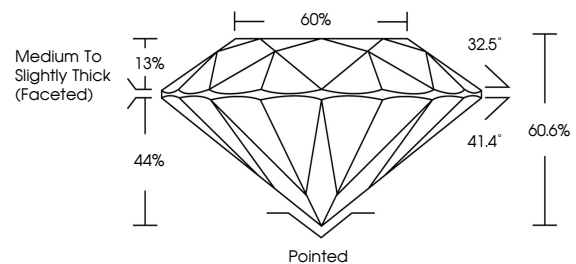
Symmetry **EXCELLENT**

Fluorescence **NONE**

Inscription(s) **LG758553810**

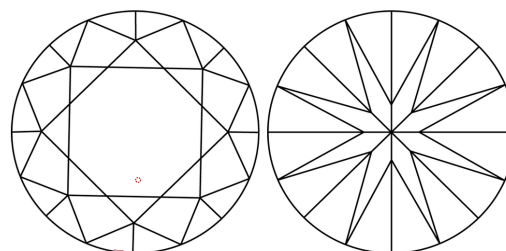
Comments: This Laboratory Grown Diamond was created by Chemical Vapor Deposition (CVD) growth process. Type IIa

PROPORTIONS



Sample Image Used

CLARITY CHARACTERISTICS



KEY TO SYMBOLS

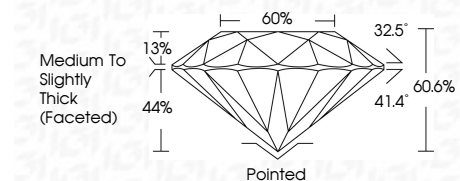
Red symbols indicate internal characteristics.
Green symbols indicate external characteristics.

COLOR

D E F G H I J Faint Very Light Light

CLARITY

| FL | IF | VS ¹⁻² | VS ¹⁻² | SI ¹⁻² | I ¹⁻³ |
|----------|---------------------|-----------------------------|------------------------|-------------------|------------------|
| Flawless | Internally Flawless | Very Very Slightly Included | Very Slightly Included | Slightly Included | Included |



ADDITIONAL GRADING INFORMATION

Polish **EXCELLENT**

Symmetry **EXCELLENT**

Fluorescence **NONE**

Inscription(s) **LG758553810**

Comments: This Laboratory Grown Diamond was created by Chemical Vapor Deposition (CVD) growth process. Type IIa



IGI



| | | | | | | | | | | | | |
|---------------------------|-----------------------|-------------|---------------|-----------|-------|-------|------------------------------------|---------|-----------|-----------|--------------|----------------|
| January 8, 2026 | 2.06 CARATS | F | VS 1 | EXCELLENT | 60.6% | 60% | Medium To Slightly Thick (Faceted) | Pointed | EXCELLENT | EXCELLENT | NONE | LG758553810 |
| IGI Report No LG758553810 | Carat Weight | Color Grade | Clarity Grade | Cut Grade | Depth | Table | Grille | Culet | Polish | Symmetry | Fluorescence | Inscription(s) |
| ROUND BRILLIANT | 8.22 - 8.26 X 4.99 MM | | | | | | | | | | | |

Comments: This Laboratory Grown Diamond was created by Chemical Vapor Deposition (CVD) growth process. Type IIa