



ELECTRONIC COPY

LG758553227  
Report verification at igi.org

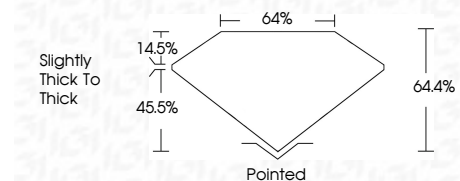


January 6, 2026  
IGI Report Number **LG758553227**  
Description **LABORATORY GROWN DIAMOND**  
Shape and Cutting Style **CUT CORNERED RECTANGULAR MODIFIED BRILLIANT**

Measurements **9.91 X 6.82 X 4.39 MM**

GRADING RESULTS

Carat Weight **2.61 CARATS**  
Color Grade **F**  
Clarity Grade **VVS 2**



ADDITIONAL GRADING INFORMATION

Polish **EXCELLENT**  
Symmetry **EXCELLENT**  
Fluorescence **NONE**  
Inscription(s) **IGI LG758553227**  
Comments: This Laboratory Grown Diamond was created by Chemical Vapor Deposition (CVD) growth process. Type IIa



January 6, 2026  
IGI Report No LG758553227  
CUT CORNERED RECT. MODIFIED BRILLIANT  
9.91 X 6.82 X 4.39 MM  
2.61 CARATS  
F  
VVS 2  
64.4%  
64%  
Slightly thick to thick  
Pointed  
EXCELLENT  
EXCELLENT  
NONE  
IGI LG758553227  
Comments: This Laboratory Grown Diamond was created by Chemical Vapor Deposition (CVD) growth process. Type IIa

January 6, 2026  
IGI Report Number **LG758553227**  
Description **LABORATORY GROWN DIAMOND**  
Shape and Cutting Style **CUT CORNERED RECTANGULAR MODIFIED BRILLIANT**  
Measurements **9.91 X 6.82 X 4.39 MM**

GRADING RESULTS

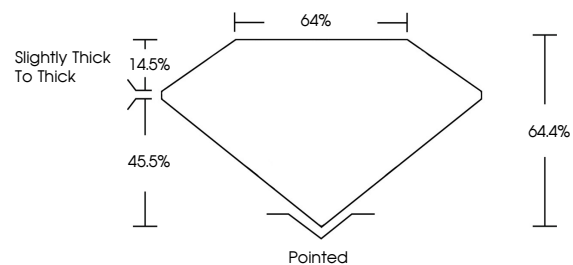
Carat Weight **2.61 CARATS**  
Color Grade **F**  
Clarity Grade **VVS 2**

ADDITIONAL GRADING INFORMATION

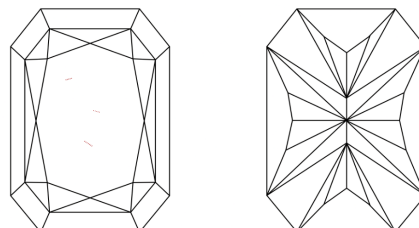
Polish **EXCELLENT**  
Symmetry **EXCELLENT**  
Fluorescence **NONE**  
Inscription(s) **IGI LG758553227**

Comments: This Laboratory Grown Diamond was created by Chemical Vapor Deposition (CVD) growth process. Type IIa

PROPORTIONS

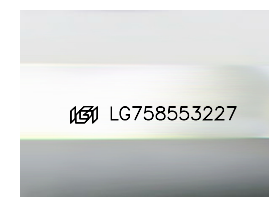


CLARITY CHARACTERISTICS



KEY TO SYMBOLS

Red symbols indicate internal characteristics.  
Green symbols indicate external characteristics.



Sample Image Used

COLOR

D E F G H I J Faint Very Light Light

CLARITY

FL IF VVS<sup>1-2</sup> VS<sup>1-2</sup> SI<sup>1-2</sup> I<sup>1-3</sup>  
Flawless Internally Flawless Very Very Slightly Included Very Slightly Included Slightly Included Included

