

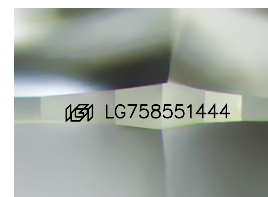
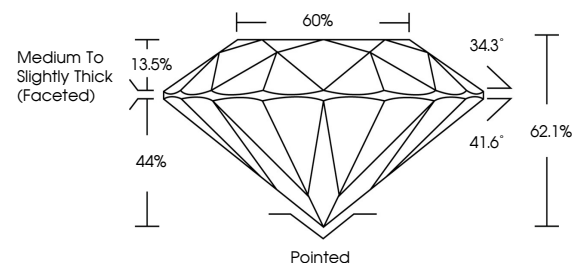


**ELECTRONIC COPY**

## LABORATORY GROWN DIAMOND REPORT

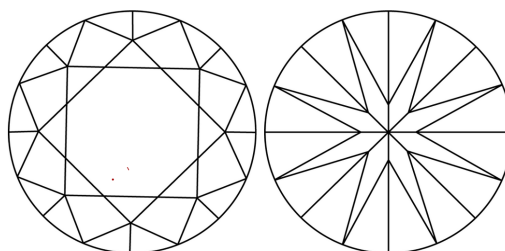
LG758551444  
Report verification at [igi.org](https://igi.org)

## PROPORTIONS



Sample Image Used

## CLARITY CHARACTERISTICS



## KEY TO SYMBOLS

Red symbols indicate internal characteristics.  
Green symbols indicate external characteristics.

## COLOR

D E F G H I J Faint Very Light Light

## CLARITY

FL	IF	VVS <sup>1-2</sup>	VS <sup>1-2</sup>	SI <sup>1-2</sup>	I <sup>1-3</sup>
Flawless	Internally Flawless	Very Very Slightly Included	Very Slightly Included	Slightly Included	Included

## LABORATORY GROWN DIAMOND REPORT



December 19, 2025

IGI Report Number **LG758551444**Description **LABORATORY GROWN DIAMOND**Shape and Cutting Style **ROUND BRILLIANT**

Measurements 8.63 - 8.67 X 5.38 MM

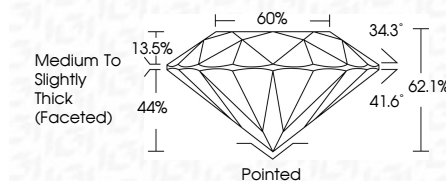
## GRADING RESULTS

Carat Weight **2.50 CARATS**

Color Grade E

Clarity Grade **VVS 2**

Cut Grade **IDEAL**



### ADDITIONAL GRADING INFORMATION

Polish EXCELLENT

Symmetry **EXCELLENT**Fluorescence **NONE**Inscription(s)  LG758551444

Comments: This Laboratory Grown Diamond was created by Chemical Vapor Deposition (CVD) growth process.  
Type IIa



© IGI 2020, International Gemological Institute

FD - 10 20

**www.igi.org**



THIS DOCUMENT WAS PRODUCED WITH THE FOLLOWING SECURITY MEASURES: SPECIAL DOCUMENT PAPER, INK SCREENS, WATERMARK, BACKGROUND DESIGNS, HOLOGRAM AND OTHER SECURITY FEATURES NOT LISTED AND DO EXCEED DOCUMENT SECURITY INDUSTRY GUIDELINES

December 19, 2025  
 IGI Report No LG758551444  
 ROUND BRILLIANT

2.50 CARATS	Carat Weight	2.50 CARATS
E	Color Grade	E
VVS 2	Clarity Grade	VVS 2
IDP AL	Cut Grade	IDP AL
62.1%	Depth	62.1%
60%	Table	60%
Medium to Slightly Thick (Faceted)	Girdle	Medium to Slightly Thick (Faceted)
Pointed	Culet	Pointed
EXCELLENT	Polish	EXCELLENT
EXCELLENT	Symmetry	EXCELLENT
NONE	Fluorescence	NONE

**Comments:**  
This Laboratory Grown Diamond was created by Chemical Vapor Deposition (CVD) growth process.