



**ELECTRONIC COPY**

LG758550199  
Report verification at igi.org



December 18, 2025

IGI Report Number **LG758550199**

Description **LABORATORY GROWN DIAMOND**

Shape and Cutting Style **TRAPEZE STEP CUT**

Measurements **8.41 X 5.34 X 3.40 MM**

**GRADING RESULTS**

Carat Weight **1.04 CARAT**

Color Grade **D**

Clarity Grade **VS 1**

December 18, 2025  
IGI Report Number **LG758550199**  
Description **LABORATORY GROWN DIAMOND**  
Shape and Cutting Style **TRAPEZE STEP CUT**  
Measurements **8.41 X 5.34 X 3.40 MM**

**GRADING RESULTS**

Carat Weight **1.04 CARAT**

Color Grade **D**

Clarity Grade **VS 1**

**ADDITIONAL GRADING INFORMATION**

Polish **EXCELLENT**

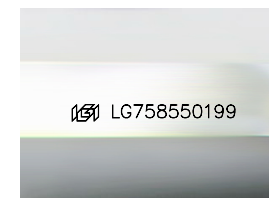
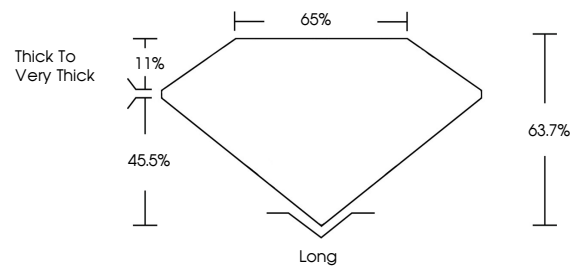
Symmetry **EXCELLENT**

Fluorescence **NONE**

Inscription(s) **IGI LG758550199**

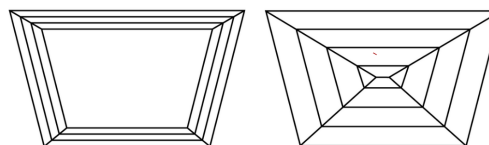
Comments: This Laboratory Grown Diamond was created by Chemical Vapor Deposition (CVD) growth process. Type IIa

**PROPORTIONS**



Sample Image Used

**CLARITY CHARACTERISTICS**



**KEY TO SYMBOLS**

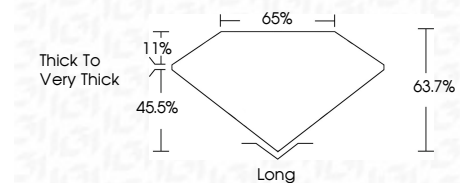
Red symbols indicate internal characteristics.  
Green symbols indicate external characteristics.

**COLOR**

D E F G H I J Faint Very Light Light

**CLARITY**

FL	IF	VS <sup>1-2</sup>	VS <sup>1-2</sup>	SI <sup>1-2</sup>	I <sup>1-3</sup>
Flawless	Internally Flawless	Very Very Slightly Included	Very Slightly Included	Slightly Included	Included



**ADDITIONAL GRADING INFORMATION**

Polish **EXCELLENT**

Symmetry **EXCELLENT**

Fluorescence **NONE**

Inscription(s) **IGI LG758550199**

Comments: This Laboratory Grown Diamond was created by Chemical Vapor Deposition (CVD) growth process. Type IIa



**IGI**



December 18, 2025  
IGI Report No LG758550199  
TRAPEZE STEP CUT  
8.41 X 5.34 X 3.40 MM  
1.04 CARAT  
D  
VS 1  
63.7%  
45.5%  
Thick To Very Thick  
Long  
EXCELLENT  
EXCELLENT  
NONE  
IGI LG758550199  
Comments: This Laboratory Grown Diamond was created by Chemical Vapor Deposition (CVD) growth process. Type IIa