



**ELECTRONIC COPY**

**LABORATORY GROWN DIAMOND REPORT**

December 24, 2025  
IGI Report Number **LG758550176**

Description **LABORATORY GROWN DIAMOND**

Shape and Cutting Style **CUT CORNERED RECTANGULAR MODIFIED BRILLIANT**

Measurements **11.40 X 7.99 X 5.52 MM**

**GRADING RESULTS**

Carat Weight **5.14 CARATS**

Color Grade **FANCY VIVID PINK**

Clarity Grade **VVS 2**

**ADDITIONAL GRADING INFORMATION**

Polish **EXCELLENT**

Symmetry **EXCELLENT**

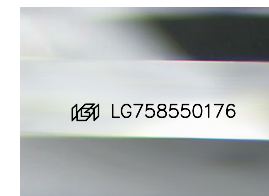
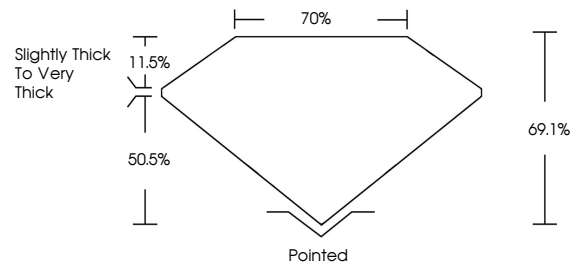
Fluorescence **STRONG**

Inscription(s) **IGI LG758550176**

Comments: This Laboratory Grown Diamond was created by Chemical Vapor Deposition (CVD) growth process. Indications of post-growth treatment.

Secondary color: Orange

**PROPORTIONS**



Sample Image Used

**COLOR**

D E F G H I J Faint Very Light Light

**CLARITY**

FL	IF	VVS <sup>1-2</sup>	VS <sup>1-2</sup>	SI <sup>1-2</sup>	I <sup>1-3</sup>
Flawless	Internally Flawless	Very Very Slightly Included	Very Slightly Included	Slightly Included	Included



December 24, 2025

IGI Report Number **LG758550176**

Description **LABORATORY GROWN DIAMOND**

Shape and Cutting Style **CUT CORNERED RECTANGULAR MODIFIED BRILLIANT**

Measurements **11.40 X 7.99 X 5.52 MM**

**GRADING RESULTS**

Carat Weight **5.14 CARATS**

Color Grade **FANCY VIVID PINK**

Clarity Grade **VVS 2**

**ADDITIONAL GRADING INFORMATION**

Polish **EXCELLENT**

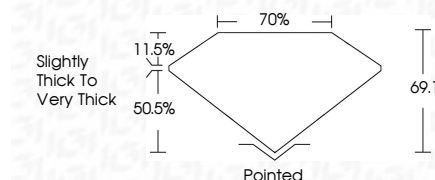
Symmetry **EXCELLENT**

Fluorescence **STRONG**

Inscription(s) **IGI LG758550176**

Comments: This Laboratory Grown Diamond was created by Chemical Vapor Deposition (CVD) growth process. Indications of post-growth treatment.

Secondary color: Orange



**IGI**



December 24, 2025  
 IGI Report No LG758550176  
**CUT CORNERED RECT. MODIFIED BRILLIANT**  
 11.40 X 7.99 X 5.52 MM  
 5.14 CARATS  
 FANCY VIVID PINK  
 VVS 2  
 69.1%  
 70%  
 Slightly Thick to Very Thick  
 Pointed  
 EXCELLENT  
 EXCELLENT  
 STRONG  
 IGI LG758550176

Comments: This Laboratory Grown Diamond was created by Chemical Vapor Deposition (CVD) growth process. Indications of post-growth treatment.  
 Secondary color: Orange