



ELECTRONIC COPY

LG758549168
Report verification at igi.org



December 18, 2025

IGI Report Number LG758549168

Description LABORATORY GROWN DIAMOND

Shape and Cutting Style ROUND BRILLIANT

Measurements 8.09 - 8.14 X 5.01 MM

GRADING RESULTS

Carat Weight 2.06 CARATS

Color Grade F

Clarity Grade VVS 2

Cut Grade IDEAL

December 18, 2025
IGI Report Number LG758549168
Description LABORATORY GROWN DIAMOND
Shape and Cutting Style ROUND BRILLIANT
Measurements 8.09 - 8.14 X 5.01 MM

GRADING RESULTS

Carat Weight 2.06 CARATS

Color Grade F

Clarity Grade VVS 2

Cut Grade IDEAL

ADDITIONAL GRADING INFORMATION

Polish EXCELLENT

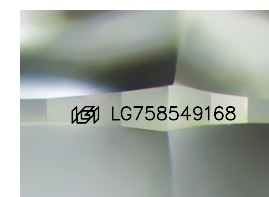
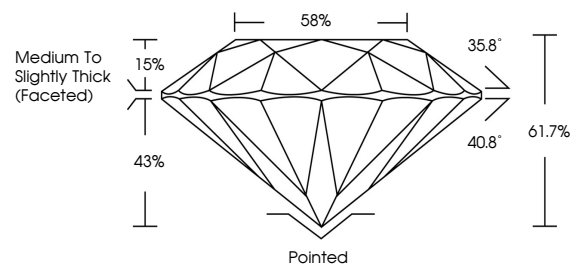
Symmetry EXCELLENT

Fluorescence NONE

Inscription(s) IGI LG758549168

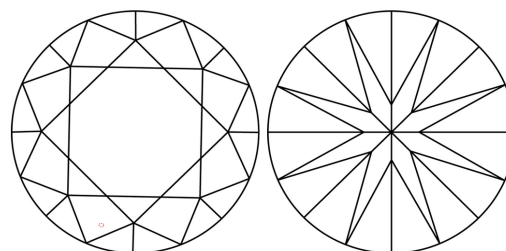
Comments: This Laboratory Grown Diamond was created by Chemical Vapor Deposition (CVD) growth process. Type IIa

PROPORTIONS



Sample Image Used

CLARITY CHARACTERISTICS



KEY TO SYMBOLS

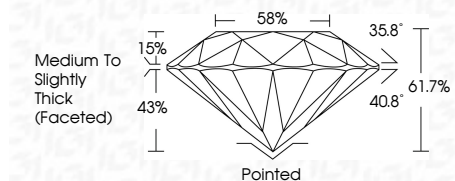
Red symbols indicate internal characteristics. Green symbols indicate external characteristics.

COLOR

D E F G H I J Faint Very Light Light

CLARITY

FL IF VVS 1-2 VS 1-2 SI 1-2 I 1-3
Flawless Internally Flawless Very Very Slightly Included Very Slightly Included Slightly Included Included



ADDITIONAL GRADING INFORMATION

Polish EXCELLENT

Symmetry EXCELLENT

Fluorescence NONE

Inscription(s) IGI LG758549168

Comments: This Laboratory Grown Diamond was created by Chemical Vapor Deposition (CVD) growth process. Type IIa



Summary table of report details including date, report number, description, measurements, grading results, and additional information.