



ELECTRONIC COPY

LG758549082 Report verification at igi.org



December 18, 2025 IGI Report Number LG758549082 Description LABORATORY GROWN DIAMOND Shape and Cutting Style ROUND BRILLIANT Measurements 10.14 - 10.20 X 6.13 MM GRADING RESULTS Carat Weight 3.91 CARATS Color Grade E Clarity Grade VS 1 Cut Grade EXCELLENT

December 18, 2025 IGI Report Number LG758549082 Description LABORATORY GROWN DIAMOND Shape and Cutting Style ROUND BRILLIANT Measurements 10.14 - 10.20 X 6.13 MM

GRADING RESULTS

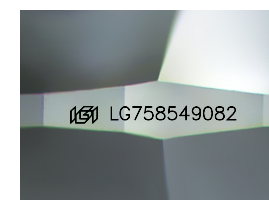
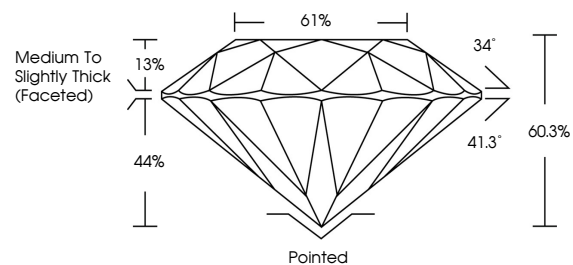
Carat Weight 3.91 CARATS Color Grade E Clarity Grade VS 1 Cut Grade EXCELLENT

ADDITIONAL GRADING INFORMATION

Polish EXCELLENT Symmetry EXCELLENT Fluorescence NONE Inscription(s) IGI LG758549082

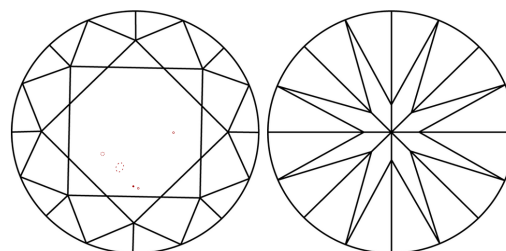
Comments: This Laboratory Grown Diamond was created by Chemical Vapor Deposition (CVD) growth process. Type IIa

PROPORTIONS



Sample Image Used

CLARITY CHARACTERISTICS



KEY TO SYMBOLS

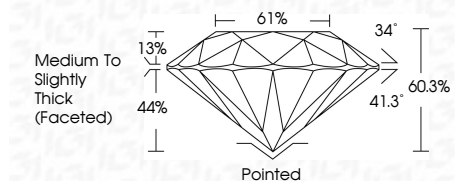
Red symbols indicate internal characteristics. Green symbols indicate external characteristics.

COLOR

D E F G H I J Faint Very Light Light

CLARITY

Table with columns: FL, IF, VS 1-2, VS 1-2, SI 1-2, I 1-3 and corresponding descriptions: Flawless, Internally Flawless, Very Very Slightly Included, Very Slightly Included, Slightly Included, Included



ADDITIONAL GRADING INFORMATION

Polish EXCELLENT Symmetry EXCELLENT Fluorescence NONE Inscription(s) IGI LG758549082 Comments: This Laboratory Grown Diamond was created by Chemical Vapor Deposition (CVD) growth process. Type IIa



IGI



December 18, 2025 IGI Report No LG758549082 ROUND BRILLIANT 10.14 - 10.20 X 6.13 MM 3.91 CARATS E Color Grade EXCELLENT VS 1 Clarity Grade EXCELLENT 60.3% Depth 61% Table Medium To Slightly Thick (Faceted) Girdle Pointed Polish EXCELLENT Symmetry EXCELLENT Fluorescence NONE Inscription(s) IGI LG758549082 Comments: This Laboratory Grown Diamond was created by Chemical Vapor Deposition (CVD) growth process. Type IIa