



ELECTRONIC COPY

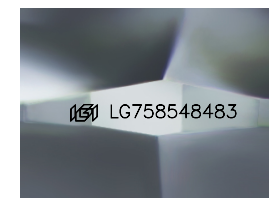
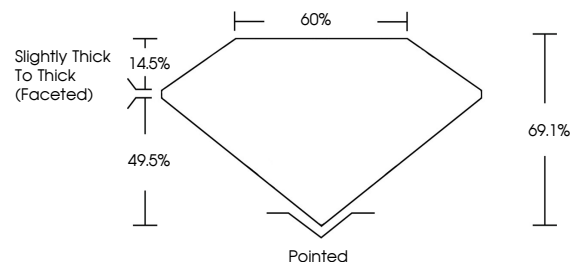
LG758548483
Report verification at igi.org



December 27, 2025
IGI Report Number **LG758548483**
Description **LABORATORY GROWN DIAMOND**
Shape and Cutting Style **CUSHION MODIFIED BRILLIANT**
Measurements **6.71 X 6.02 X 4.16 MM**
GRADING RESULTS
Carat Weight **1.55 CARAT**
Color Grade **FANCY YELLOW**
Clarity Grade **VVS 2**

December 27, 2025
IGI Report Number **LG758548483**
Description **LABORATORY GROWN DIAMOND**
Shape and Cutting Style **CUSHION MODIFIED BRILLIANT**
Measurements **6.71 X 6.02 X 4.16 MM**

PROPORTIONS

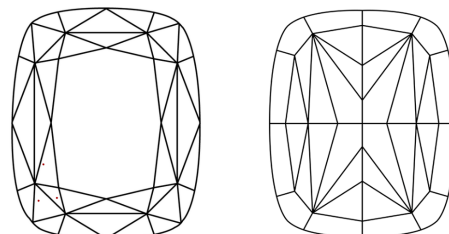


Sample Image Used

GRADING RESULTS

Carat Weight **1.55 CARAT**
Color Grade **FANCY YELLOW**
Clarity Grade **VVS 2**

CLARITY CHARACTERISTICS



ADDITIONAL GRADING INFORMATION

Polish **EXCELLENT**
Symmetry **EXCELLENT**
Fluorescence **NONE**
Inscription(s) **IGI LG758548483**

Comments: This Laboratory Grown Diamond was created by Chemical Vapor Deposition (CVD) growth process.

KEY TO SYMBOLS

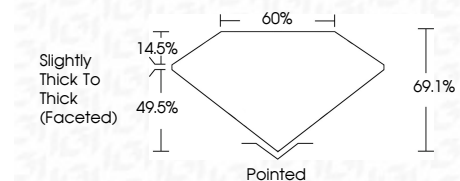
Red symbols indicate internal characteristics.
Green symbols indicate external characteristics.

COLOR

D E F G H I J Faint Very Light Light

CLARITY

FL	IF	VVS ¹⁻²	VS ¹⁻²	SI ¹⁻²	I ¹⁻³
Flawless	Internally Flawless	Very Very Slightly Included	Very Slightly Included	Slightly Included	Included



ADDITIONAL GRADING INFORMATION

Polish **EXCELLENT**
Symmetry **EXCELLENT**
Fluorescence **NONE**
Inscription(s) **IGI LG758548483**
Comments: This Laboratory Grown Diamond was created by Chemical Vapor Deposition (CVD) growth process.



December 27, 2025
IGI Report No LG758548483
CUSHION MODIFIED BRILLIANT
6.71 X 6.02 X 4.16 MM
1.55 CARAT
FANCY YELLOW
VVS 2
69.1%
60%
Slightly Thick To Thick (Faceted)
Pointed
EXCELLENT
EXCELLENT
NONE
IGI LG758548483
Comments: This Laboratory Grown Diamond was created by Chemical Vapor Deposition (CVD) growth process.