



**ELECTRONIC COPY**

LG758547776  
Report verification at igi.org



December 20, 2025

IGI Report Number **LG758547776**

Description **LABORATORY GROWN DIAMOND**

Shape and Cutting Style **ROUND BRILLIANT**

Measurements **8.72 - 8.78 X 5.34 MM**

**GRADING RESULTS**

Carat Weight **2.50 CARATS**

Color Grade **E**

Clarity Grade **VVS 2**

Cut Grade **EXCELLENT**

December 20, 2025  
IGI Report Number **LG758547776**  
Description **LABORATORY GROWN DIAMOND**  
Shape and Cutting Style **ROUND BRILLIANT**  
Measurements **8.72 - 8.78 X 5.34 MM**

**GRADING RESULTS**

Carat Weight **2.50 CARATS**

Color Grade **E**

Clarity Grade **VVS 2**

Cut Grade **EXCELLENT**

**ADDITIONAL GRADING INFORMATION**

Polish **EXCELLENT**

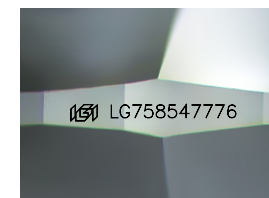
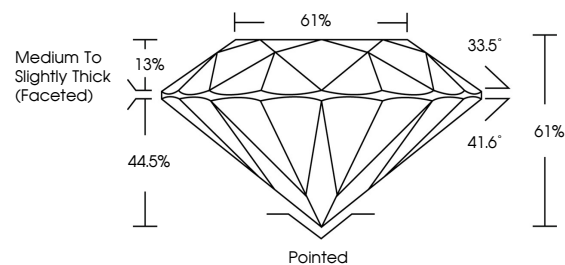
Symmetry **EXCELLENT**

Fluorescence **NONE**

Inscription(s) **LG758547776**

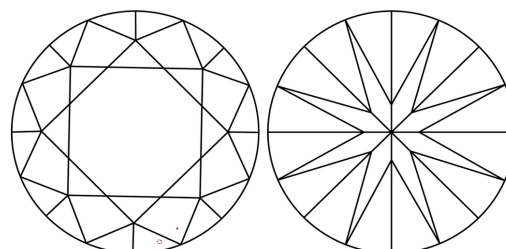
Comments: This Laboratory Grown Diamond was created by Chemical Vapor Deposition (CVD) growth process.  
Type IIa

**PROPORTIONS**



Sample Image Used

**CLARITY CHARACTERISTICS**



**KEY TO SYMBOLS**

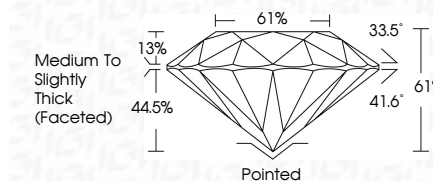
Red symbols indicate internal characteristics.  
Green symbols indicate external characteristics.

**COLOR**

D E F G H I J Faint Very Light Light

**CLARITY**

| FL       | IF                  | VVS <sup>1-2</sup>          | VS <sup>1-2</sup>      | SI <sup>1-2</sup> | I <sup>1-3</sup> |
|----------|---------------------|-----------------------------|------------------------|-------------------|------------------|
| Flawless | Internally Flawless | Very Very Slightly Included | Very Slightly Included | Slightly Included | Included         |



**ADDITIONAL GRADING INFORMATION**

Polish **EXCELLENT**

Symmetry **EXCELLENT**

Fluorescence **NONE**

Inscription(s) **LG758547776**

Comments: This Laboratory Grown Diamond was created by Chemical Vapor Deposition (CVD) growth process.  
Type IIa



**IGI**



December 20, 2025  
IGI Report No LG758547776  
**ROUND BRILLIANT**  
8.72 - 8.78 X 5.34 MM  
2.50 CARATS  
Color Grade **E**  
Clarity Grade **VVS 2**  
Depth **EXCELLENT**  
Table **61%**  
Girdle **61%**  
Medium To Slightly Thick (Faceted)  
Culet **Pointed**  
Polish **EXCELLENT**  
Symmetry **EXCELLENT**  
Fluorescence **NONE**  
Inscription(s) **LG758547776**  
Comments: This Laboratory Grown Diamond was created by Chemical Vapor Deposition (CVD) growth process.  
Type IIa