



December 26, 2025

**IGI Report Number** LG758546637  
**CUT CORNERED RECTANGULAR  
MODIFIED BRILLIANT  
LABORATORY GROWN DIAMOND**  
**6.87 X 4.94 X 2.94 MM**

**Carat Weight** 0.96 CARAT  
**Color Grade** FANCY VIVID ORANGY PINK  
**Clarity Grade** VS 1  
**Polish** VERY GOOD  
**Symmetry** VERY GOOD  
**Fluorescence** SLIGHT  
**Inscription(s)** IGI LG758546637

**Comments:** This Laboratory Grown Diamond was created by Chemical Vapor Deposition (CVD) growth process. Indications of post-growth treatment.

**LABORATORY GROWN DIAMOND REPORT**

December 26, 2025

IGI Report Number **LG758546637**

Description **LABORATORY GROWN DIAMOND**

Shape and Cutting Style **CUT CORNERED RECTANGULAR MODIFIED  
BRILLIANT**

Measurements **6.87 X 4.94 X 2.94 MM**

**GRADING RESULTS**

**Carat Weight** 0.96 CARAT

**Color Grade** FANCY VIVID ORANGY PINK

**Clarity Grade** VS 1

**ADDITIONAL GRADING INFORMATION**

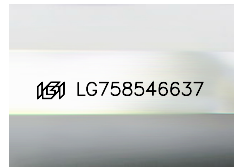
**Polish** VERY GOOD

**Symmetry** VERY GOOD

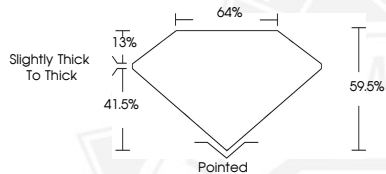
**Fluorescence** SLIGHT

**Inscription(s)** IGI LG758546637

**Comments:** This Laboratory Grown Diamond was created by Chemical Vapor Deposition (CVD) growth process. Indications of post-growth treatment.



Sample Image Used



December 26, 2025

**IGI Report Number** LG758546637  
**CUT CORNERED RECTANGULAR  
MODIFIED BRILLIANT  
LABORATORY GROWN DIAMOND**  
**6.87 X 4.94 X 2.94 MM**

**Carat Weight** 0.96 CARAT  
**Color Grade** FANCY VIVID ORANGY PINK  
**Clarity Grade** VS 1  
**Polish** VERY GOOD  
**Symmetry** VERY GOOD  
**Fluorescence** SLIGHT  
**Inscription(s)** IGI LG758546637

**Comments:** This Laboratory Grown Diamond was created by Chemical Vapor Deposition (CVD) growth process. Indications of post-growth treatment.

THIS DOCUMENT WAS PRODUCED WITH THE FOLLOWING SECURITY MEASURES: SPECIAL DOCUMENT PAPER, INK SCREENS, WATERMARK, BACKGROUND DESIGNS, HOLOGRAM AND OTHER SECURITY FEATURES NOT LISTED AND DO EXCEED DOCUMENT SECURITY INDUSTRY GUIDELINES.

For terms & conditions and to verify this report, please visit [www.igi.org](http://www.igi.org)