



LABORATORY GROWN DIAMOND REPORT

January 2, 2026
 IGI Report Number **LG758546624**
 Description **LABORATORY GROWN DIAMOND**
 Shape and Cutting Style **LOZENGE ROSE CUT**
 Measurements **9.51 X 8.42 X 1.54 MM**

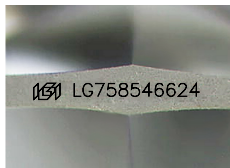
GRADING RESULTS

Carat Weight **0.84 CARAT**
 Color Grade **FANCY VIVID GREEN**
 Clarity Grade **VS 2**

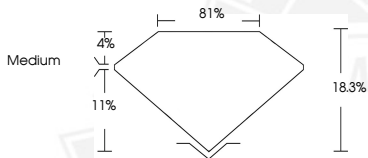
ADDITIONAL GRADING INFORMATION

Polish **EXCELLENT**
 Symmetry **EXCELLENT**
 Fluorescence **NONE**
 Inscription(s) **IGI LG758546624**

Comments: This Laboratory Grown Diamond was created by
 Chemical Vapor Deposition (CVD) growth process.
 Indications of post-growth treatment.



Sample Image Used



January 2, 2026
 IGI Report Number **LG758546624**
LOZENGE ROSE CUT
LABORATORY GROWN DIAMOND
9.51 X 8.42 X 1.54 MM
 Carat Weight **0.84 CARAT**
 Color Grade **FANCY VIVID GREEN**
 Clarity Grade **VS 2**
 Polish **EXCELLENT**
 Symmetry **EXCELLENT**
 Fluorescence **NONE**
 Inscription(s) **IGI LG758546624**

Comments: This Laboratory Grown
 Diamond was created by
 Chemical Vapor Deposition (CVD)
 growth process. Indications of
 post-growth treatment.



January 2, 2026
 IGI Report Number **LG758546624**
LOZENGE ROSE CUT
LABORATORY GROWN DIAMOND
9.51 X 8.42 X 1.54 MM
 Carat Weight **0.84 CARAT**
 Color Grade **FANCY VIVID GREEN**
 Clarity Grade **VS 2**
 Polish **EXCELLENT**
 Symmetry **EXCELLENT**
 Fluorescence **NONE**
 Inscription(s) **IGI LG758546624**

Comments: This Laboratory Grown
 Diamond was created by
 Chemical Vapor Deposition (CVD)
 growth process. Indications of
 post-growth treatment.



THIS DOCUMENT WAS PRODUCED WITH THE FOLLOWING SECURITY MEASURES: SPECIAL DOCUMENT PAPER, INK SCREENS, WATERMARK, BACKGROUND DESIGNS, HOLOGRAM AND OTHER SECURITY FEATURES NOT LISTED AND DO EXCEED DOCUMENT SECURITY INDUSTRY GUIDELINES.