



**INTERNATIONAL  
GEMOLOGICAL  
INSTITUTE**

**ELECTRONIC COPY**



January 2, 2026

**IGI Report Number** LG758546610  
**CUT CORNERED SQUARE  
MODIFIED BRILLIANT  
LABORATORY GROWN DIAMOND**  
**5.33 X 4.85 X 3.14 MM**

**Carat Weight** 0.74 CARAT  
**Color Grade** **FANCY INTENSE PINK**

**Clarity Grade** **VS 2**

**Polish** **VERY GOOD**

**Symmetry** **GOOD**

**Fluorescence** **SLIGHT**

**Inscription(s)** (IGI) LG758546610

Comments: This Laboratory Grown Diamond was created by Chemical Vapor Deposition (CVD) growth process. Indications of post-growth treatment.

**LABORATORY GROWN DIAMOND REPORT**

January 2, 2026

IGI Report Number

LG758546610

Description

LABORATORY GROWN DIAMOND

Shape and Cutting Style

CUT CORNERED SQUARE MODIFIED  
BRILLIANT

Measurements

5.33 X 4.85 X 3.14 MM

**GRADING RESULTS**

Carat Weight

0.74 CARAT

Color Grade

FANCY INTENSE PINK

Clarity Grade

VS 2

**ADDITIONAL GRADING INFORMATION**

Polish

VERY GOOD

Symmetry

GOOD

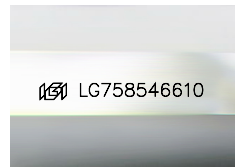
Fluorescence

SLIGHT

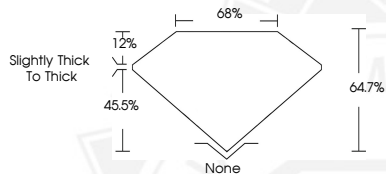
Inscription(s)

(IGI) LG758546610

Comments: This Laboratory Grown Diamond was created by Chemical Vapor Deposition (CVD) growth process. Indications of post-growth treatment.



Sample Image Used



Slightly Thick To Thick



January 2, 2026

**IGI Report Number** LG758546610  
**CUT CORNERED SQUARE MODIFIED  
BRILLIANT  
LABORATORY GROWN DIAMOND**  
**5.33 X 4.85 X 3.14 MM**

**Carat Weight** 0.74 CARAT  
**Color Grade** **FANCY INTENSE PINK**

**Clarity Grade** **VS 2**

**Polish** **VERY GOOD**

**Symmetry** **GOOD**

**Fluorescence** **SLIGHT**

**Inscription(s)** (IGI) LG758546610

Comments: This Laboratory Grown Diamond was created by Chemical Vapor Deposition (CVD) growth process. Indications of post-growth treatment.



THIS DOCUMENT WAS PRODUCED WITH THE FOLLOWING SECURITY MEASURES: SPECIAL DOCUMENT PAPER, INK SCREENS, WATERMARK, BACKGROUND DESIGNS, HOLOGRAM AND OTHER SECURITY FEATURES NOT LISTED AND DO EXCEED DOCUMENT SECURITY INDUSTRY GUIDELINES.

For terms & conditions and to verify this report, please visit [www.igi.org](http://www.igi.org)