



**LABORATORY GROWN DIAMOND REPORT**

January 2, 2026  
 IGI Report Number **LG758546605**  
 Description **LABORATORY GROWN DIAMOND**  
 Shape and Cutting Style **HEXAGONAL MODIFIED STEP CUT**  
 Measurements **7.82 X 4.11 X 2.61 MM**

**GRADING RESULTS**

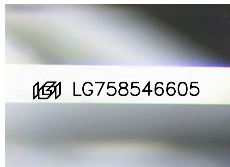
Carat Weight **0.74 CARAT**  
 Color Grade **FANCY INTENSE PINK**  
 Clarity Grade **VS 1**

**ADDITIONAL GRADING INFORMATION**

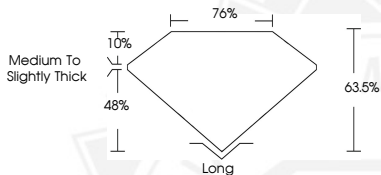
Polish **VERY GOOD**  
 Symmetry **VERY GOOD**  
 Fluorescence **SLIGHT**  
 Inscription(s) **IGI LG758546605**

Comments: This Laboratory Grown Diamond was created by Chemical Vapor Deposition (CVD) growth process. Indications of post-growth treatment.

Secondary color: Orange



Sample Image Used



January 2, 2026

IGI Report Number **LG758546605**  
**HEXAGONAL MODIFIED STEP CUT**  
**LABORATORY GROWN DIAMOND**  
**7.82 X 4.11 X 2.61 MM**

Carat Weight **0.74 CARAT**  
 Color Grade **FANCY INTENSE PINK**  
 Clarity Grade **VS 1**  
 Polish **VERY GOOD**  
 Symmetry **VERY GOOD**  
 Fluorescence **SLIGHT**  
 Inscription(s) **IGI LG758546605**

Comments: This Laboratory Grown Diamond was created by Chemical Vapor Deposition (CVD) growth process. Indications of post-growth treatment. Secondary color: Orange



January 2, 2026

IGI Report Number **LG758546605**  
**HEXAGONAL MODIFIED STEP CUT**  
**LABORATORY GROWN DIAMOND**  
**7.82 X 4.11 X 2.61 MM**

Carat Weight **0.74 CARAT**  
 Color Grade **FANCY INTENSE PINK**  
 Clarity Grade **VS 1**  
 Polish **VERY GOOD**  
 Symmetry **VERY GOOD**  
 Fluorescence **SLIGHT**  
 Inscription(s) **IGI LG758546605**

Comments: This Laboratory Grown Diamond was created by Chemical Vapor Deposition (CVD) growth process. Indications of post-growth treatment. Secondary color: Orange



THIS DOCUMENT WAS PRODUCED WITH THE FOLLOWING SECURITY MEASURES: SPECIAL DOCUMENT PAPER, INK SCREENS, WATERMARK, BACKGROUND DESIGNS, HOLOGRAM AND OTHER SECURITY FEATURES NOT LISTED AND DO EXCEED DOCUMENT SECURITY INDUSTRY GUIDELINES.