



INTERNATIONAL GEMOLOGICAL INSTITUTE

ELECTRONIC COPY

LABORATORY GROWN DIAMOND REPORT

December 25, 2025

IGI Report Number

LG758542939

Description

LABORATORY GROWN DIAMOND

Shape and Cutting Style

PRINCESS CUT

Measurements

5.21 X 5.09 X 3.54 MM

GRADING RESULTS

Carat Weight

0.88 CARAT

Color Grade

FANCY VIVID PINK

Clarity Grade

VS 1

ADDITIONAL GRADING INFORMATION

Polish

VERY GOOD

Symmetry

VERY GOOD

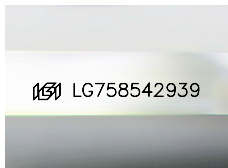
Fluorescence

SLIGHT

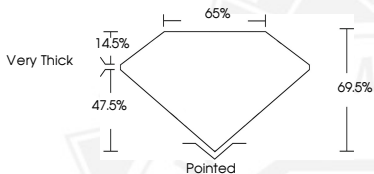
Inscription(s)

IGI LG758542939

Comments: This Laboratory Grown Diamond was created by Chemical Vapor Deposition (CVD) growth process. Indications of post-growth treatment.



Sample Image Used



December 25, 2025

IGI Report Number LG758542939

PRINCESS CUT

LABORATORY GROWN DIAMOND

5.21 X 5.09 X 3.54 MM

Carat Weight 0.88 CARAT

Color Grade FANCY VIVID PINK

Clarity Grade VS 1

Polish VERY GOOD

Symmetry VERY GOOD

Fluorescence SLIGHT

Inscription(s) IGI LG758542939

Comments: This Laboratory Grown Diamond was created by Chemical Vapor Deposition (CVD) growth process. Indications of post-growth treatment.



December 25, 2025

IGI Report Number LG758542939

PRINCESS CUT

LABORATORY GROWN DIAMOND

5.21 X 5.09 X 3.54 MM

Carat Weight 0.88 CARAT

Color Grade FANCY VIVID PINK

Clarity Grade VS 1

Polish VERY GOOD

Symmetry VERY GOOD

Fluorescence SLIGHT

Inscription(s) IGI LG758542939

Comments: This Laboratory Grown Diamond was created by Chemical Vapor Deposition (CVD) growth process. Indications of post-growth treatment.



THIS DOCUMENT WAS PRODUCED WITH THE FOLLOWING SECURITY MEASURES: SPECIAL DOCUMENT PAPER, INK SCREENS, WATERMARK, BACKGROUND DESIGNS, HOLOGRAM AND OTHER SECURITY FEATURES NOT LISTED AND DO EXCEED DOCUMENT SECURITY INDUSTRY GUIDELINES.

For terms & conditions and to verify this report, please visit www.igi.org